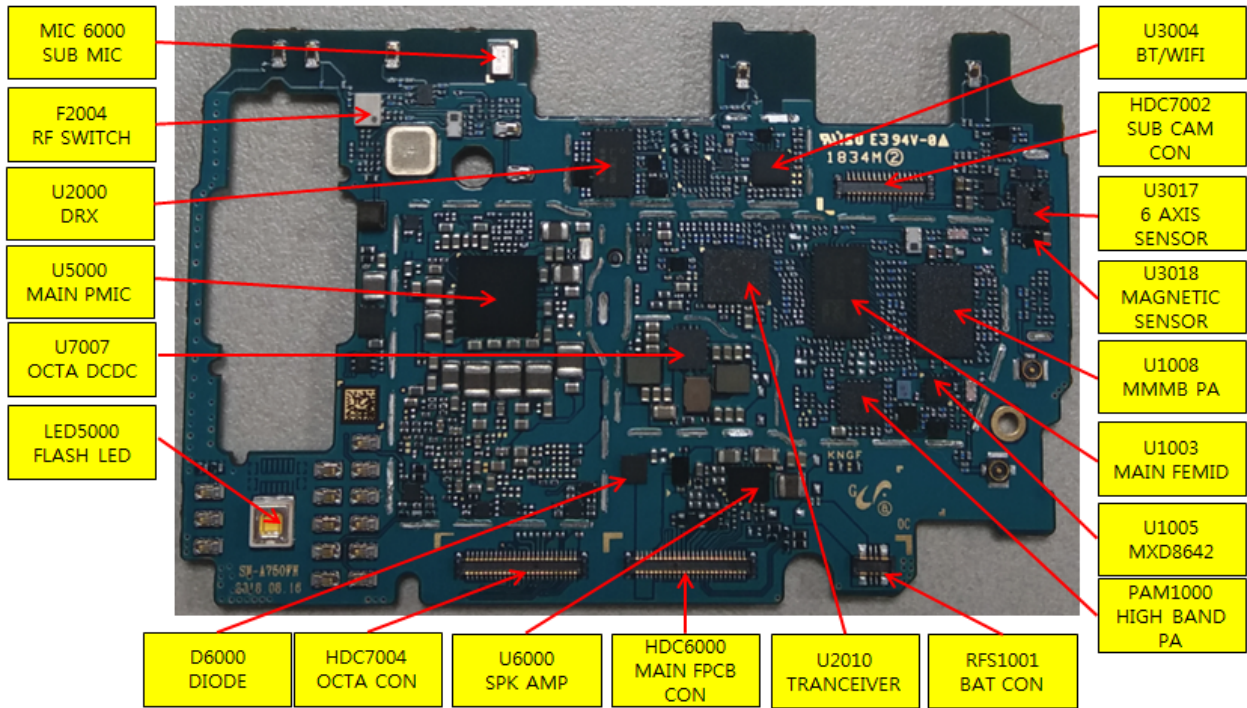


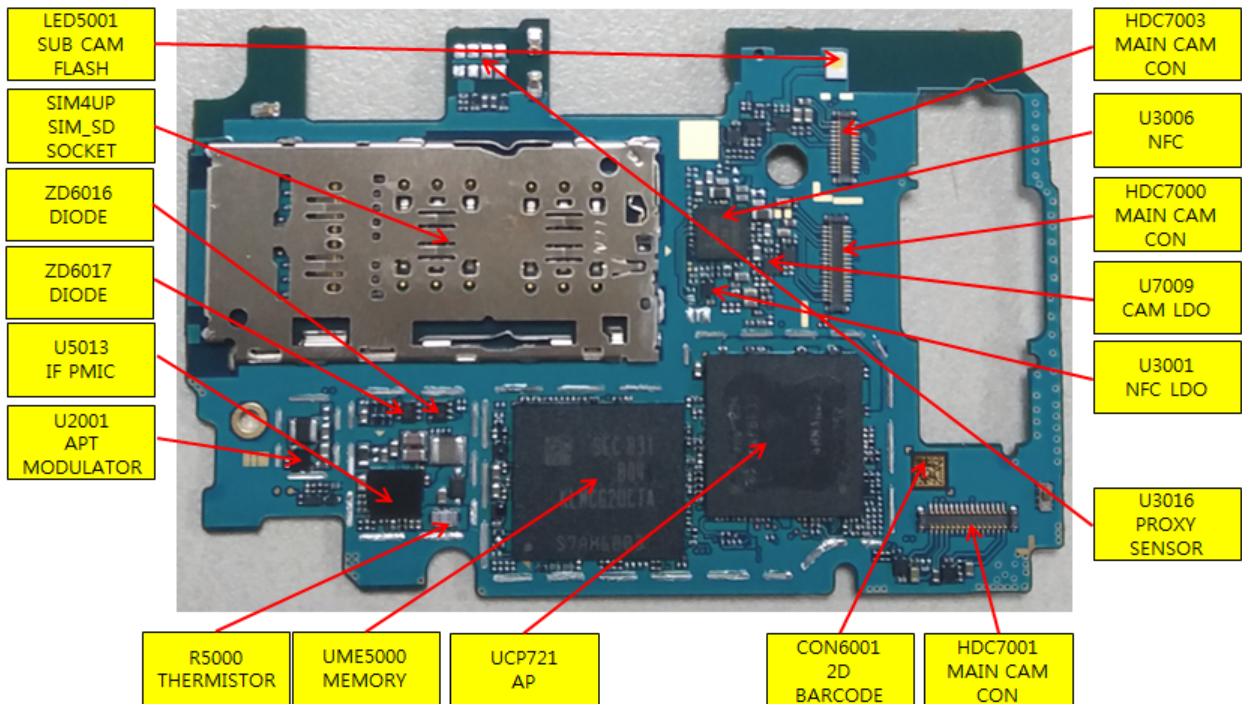
8. Level 3 Repair

8-1. Components Layout

MAIN PBA (TOP SIDE)

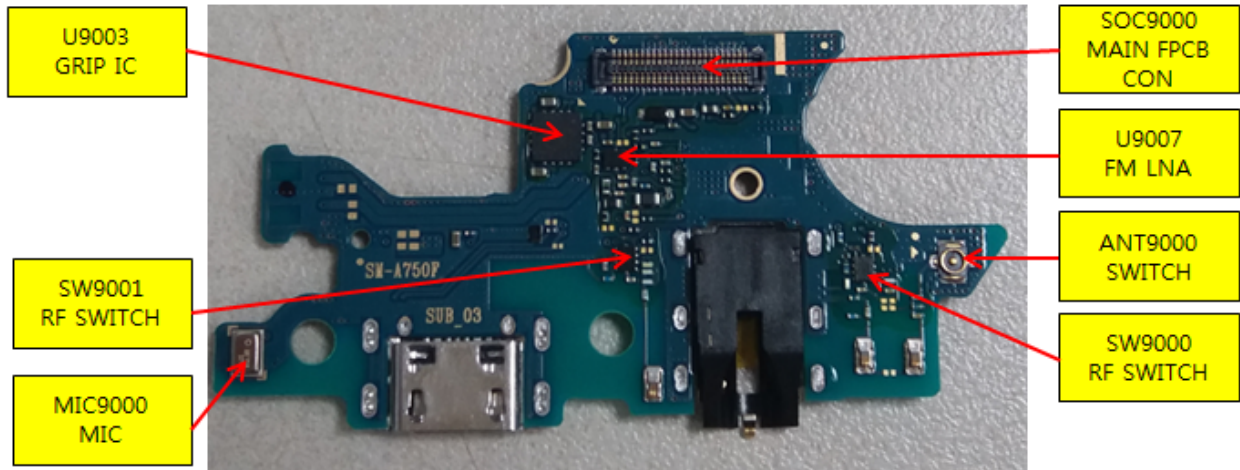


MAIN PBA (BOTTOM SIDE)

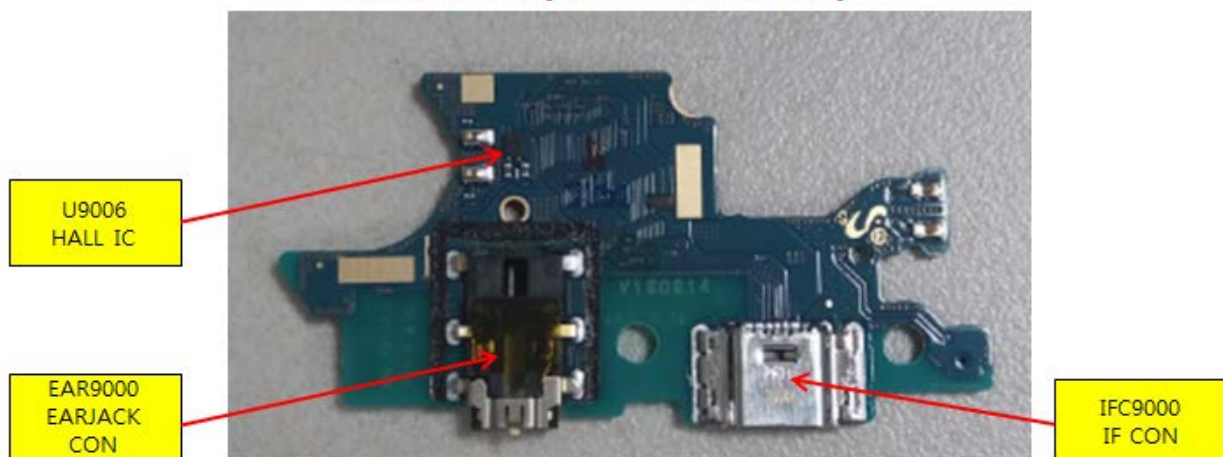


8. Level 3 Repair

SUB PBA (TOP SIDE)

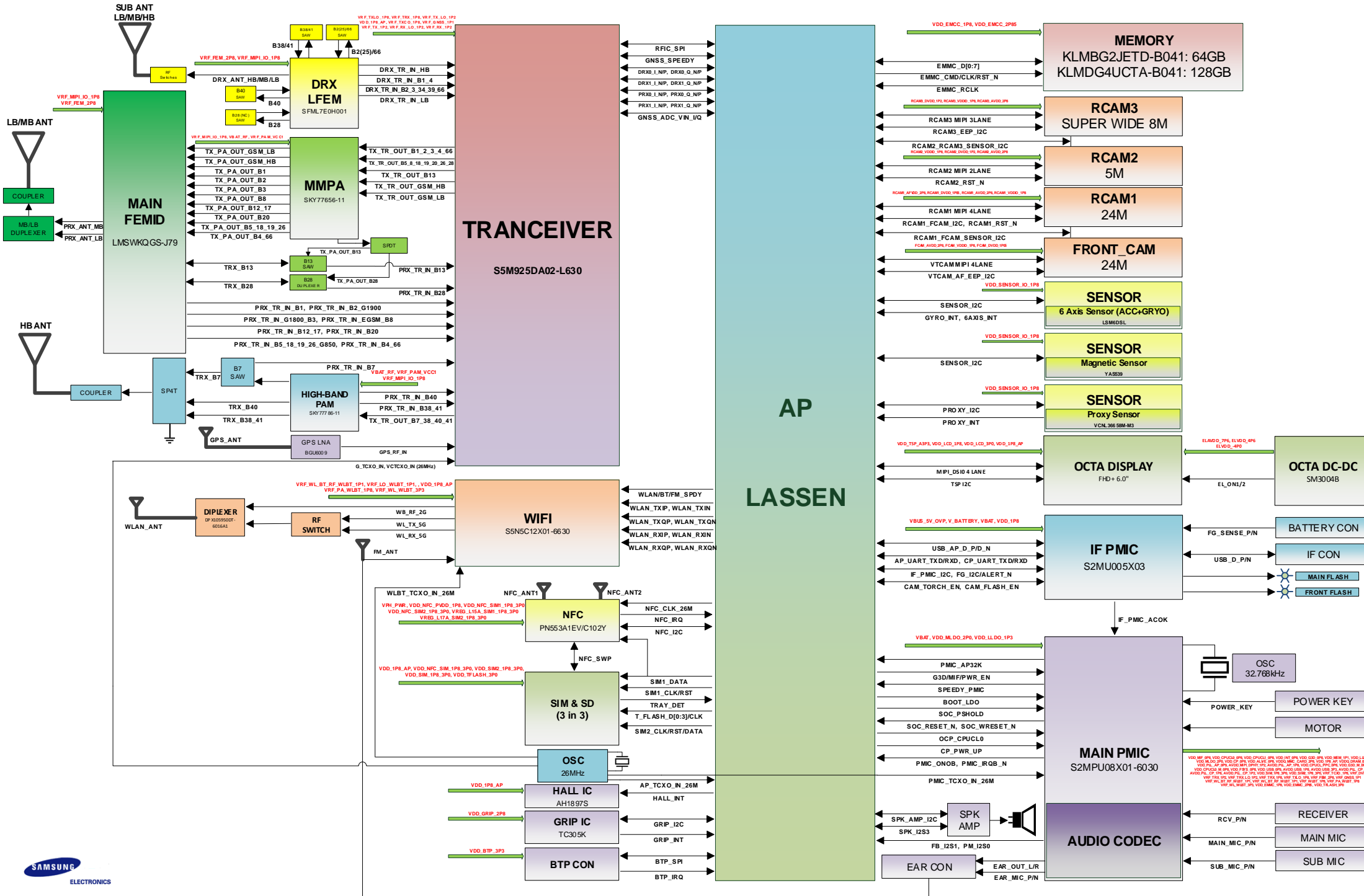


SUB PBA (BOTTOM SIDE)

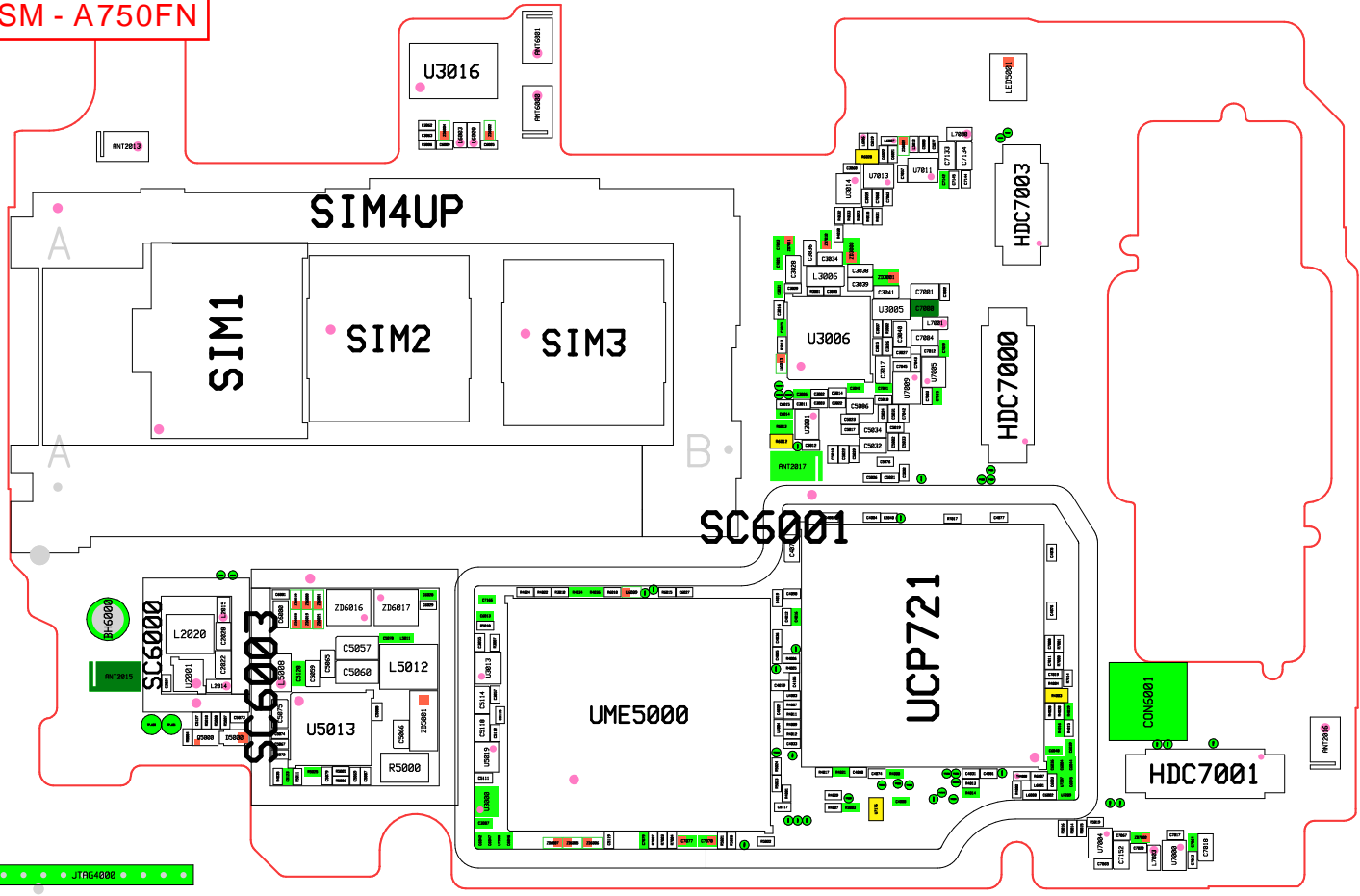


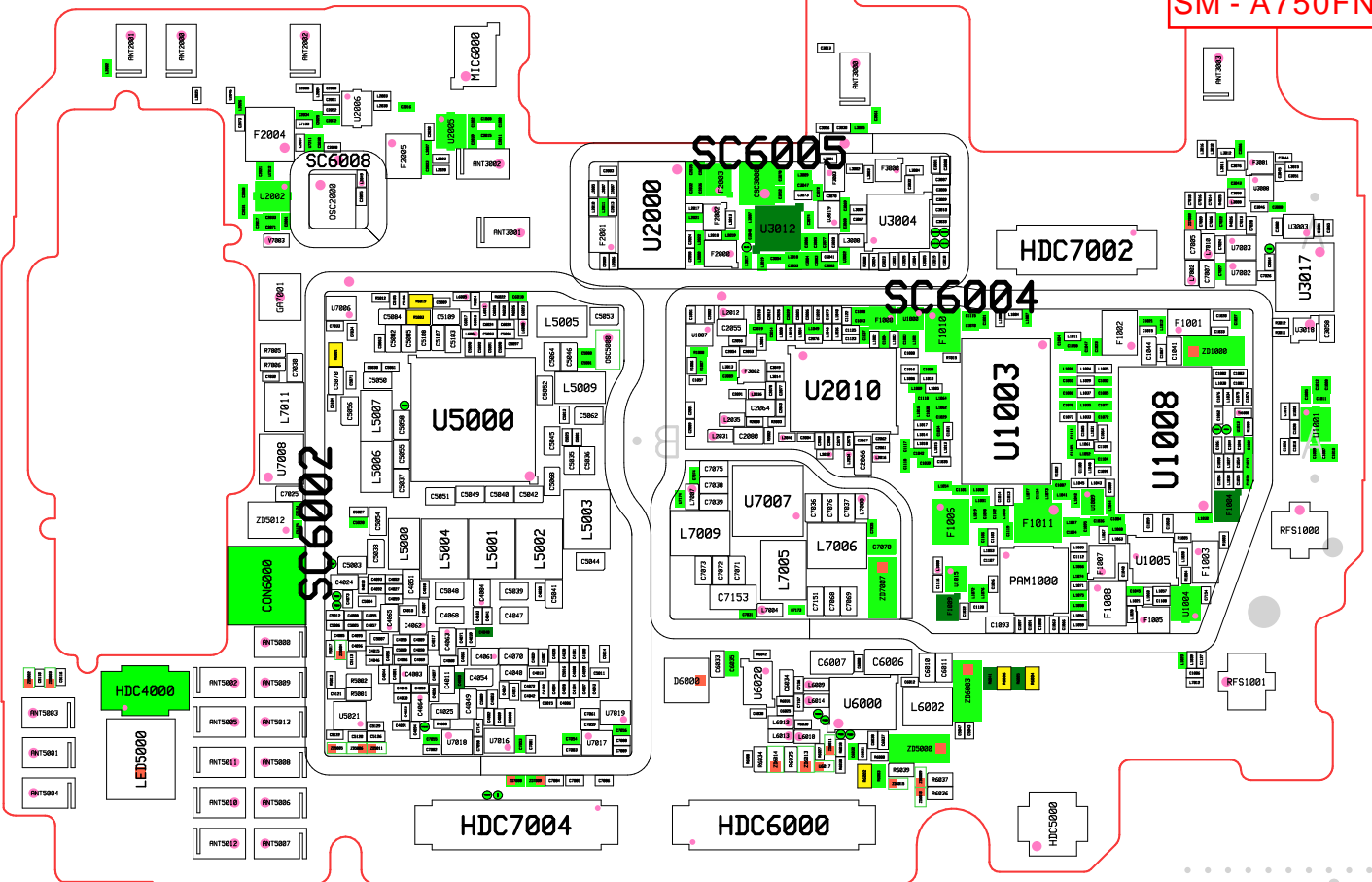
A7 2018 Block Diagram

SM - A750FN/F/GN/G
Common



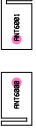
SM - A750FN





SM - A750F

U3016



LEP008

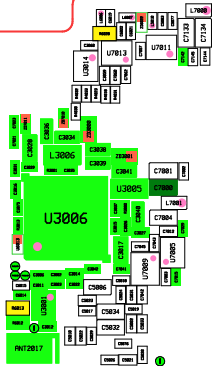
PIV2013

SIM4UP

SIM1

SIM2

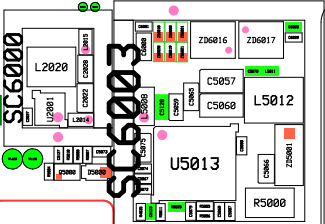
SIM3



HDC7003

HDC7000

SC6001



SC6003

UME5000

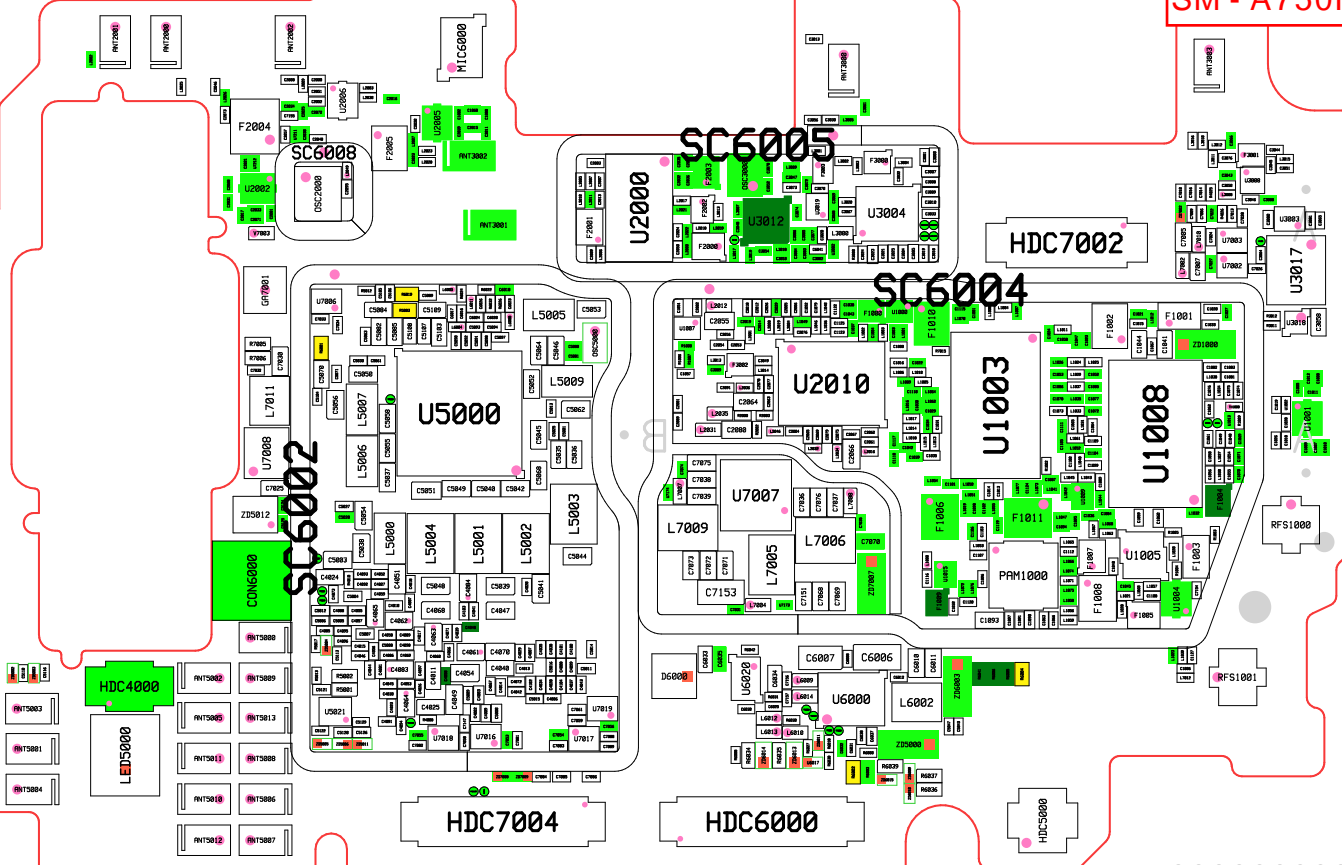
UCP721

CONG001

HDC7001

PIV2016

JTR04600



SM - A750GN

U3016



LED05K1

PNT2013

SIM4UP

SIM1

SIM2

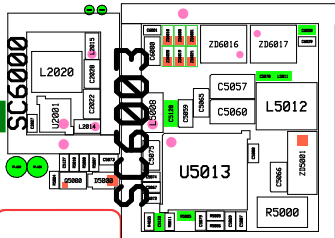
SIM3



HDC7003

HDC7000

SC6001



BHC000

SC6003

UME5000

UCP721

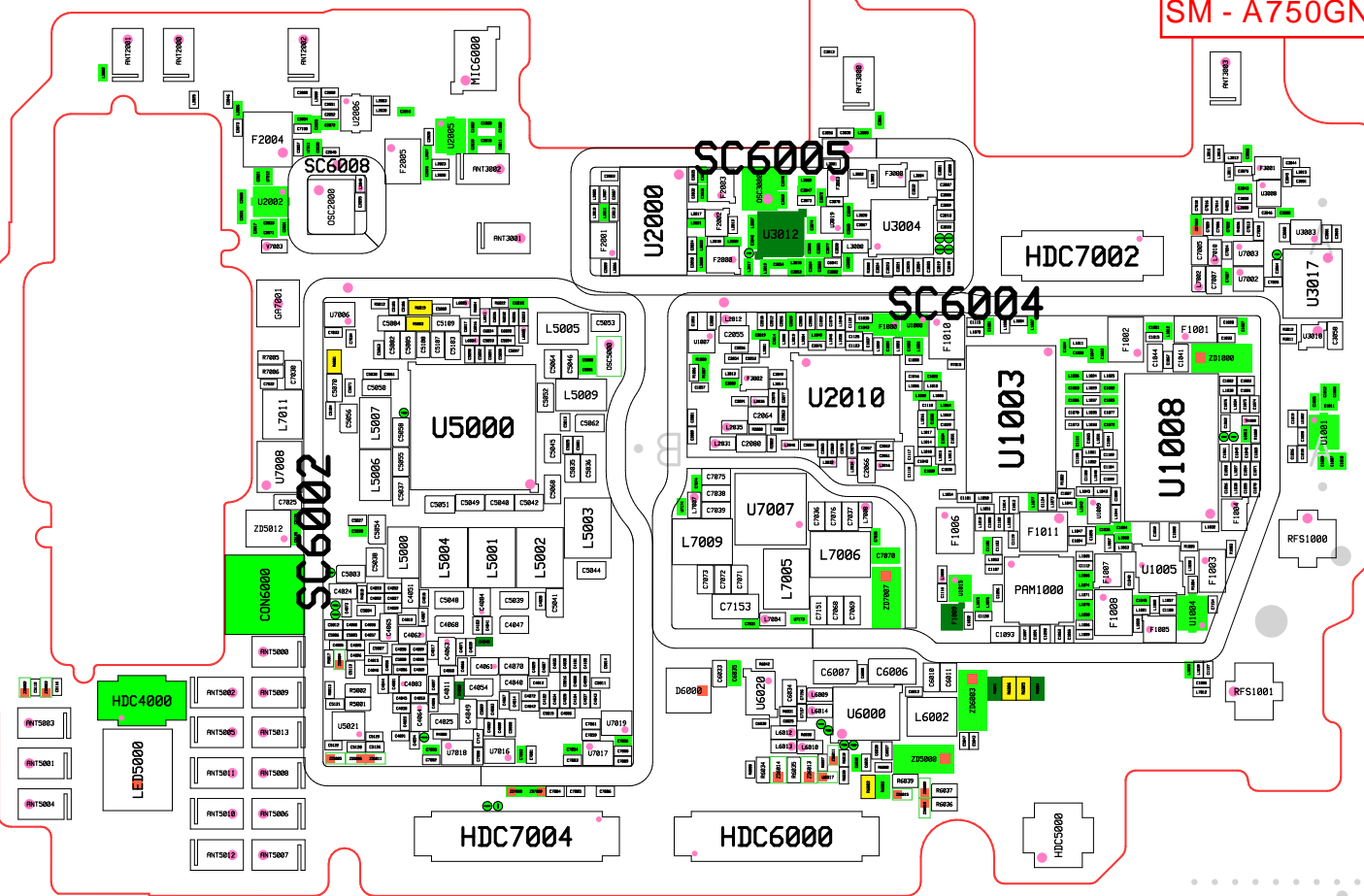
CON6001

HDC7001

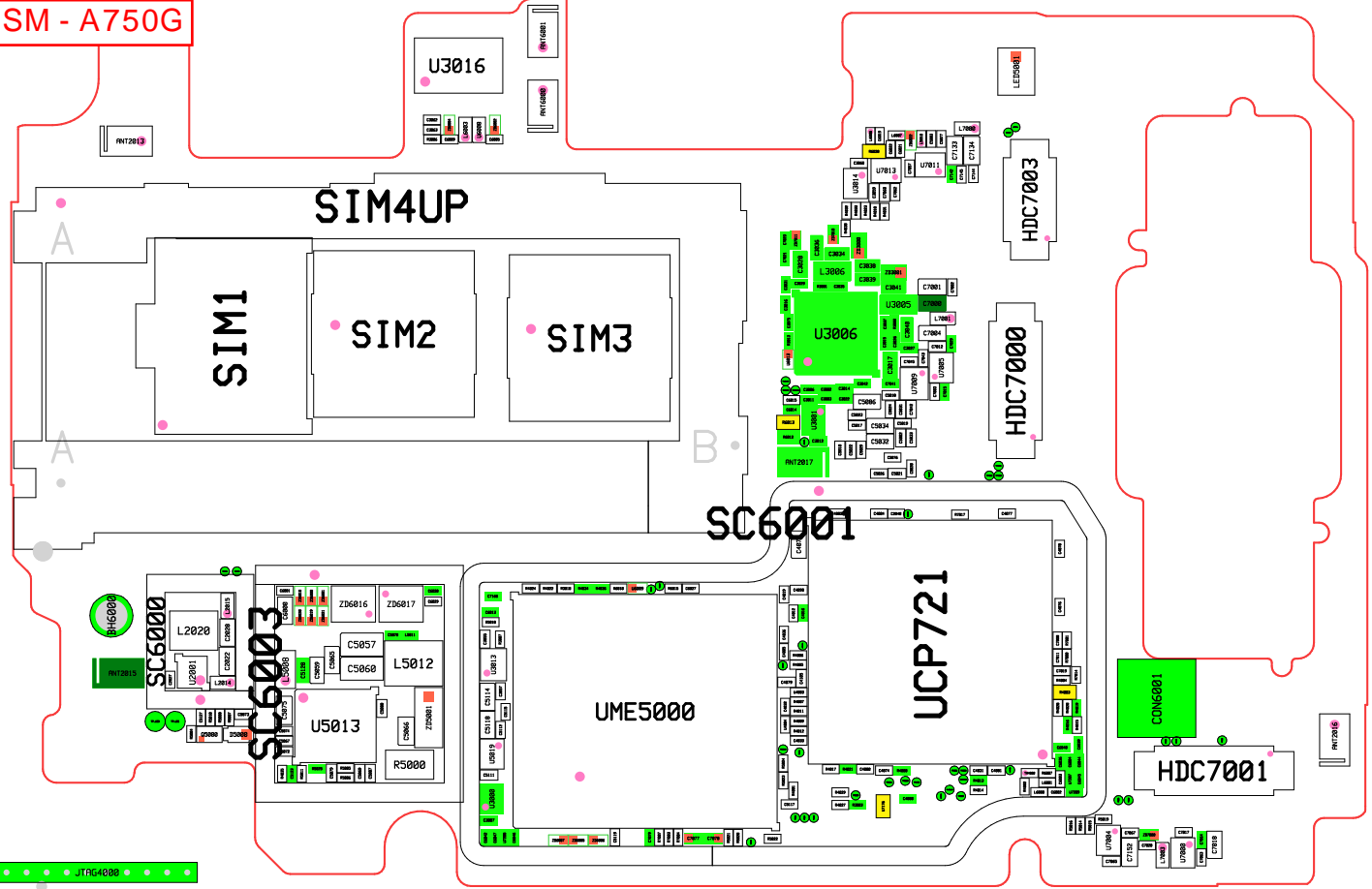
PNT05K

UT7G4088





SM - A750G



U3016

PNT2013

SIM4UP

SIM1

SIM2

SIM3

U3006

HDC7003

HDC7000

SC6001

UME5000

UCP721

SC6000

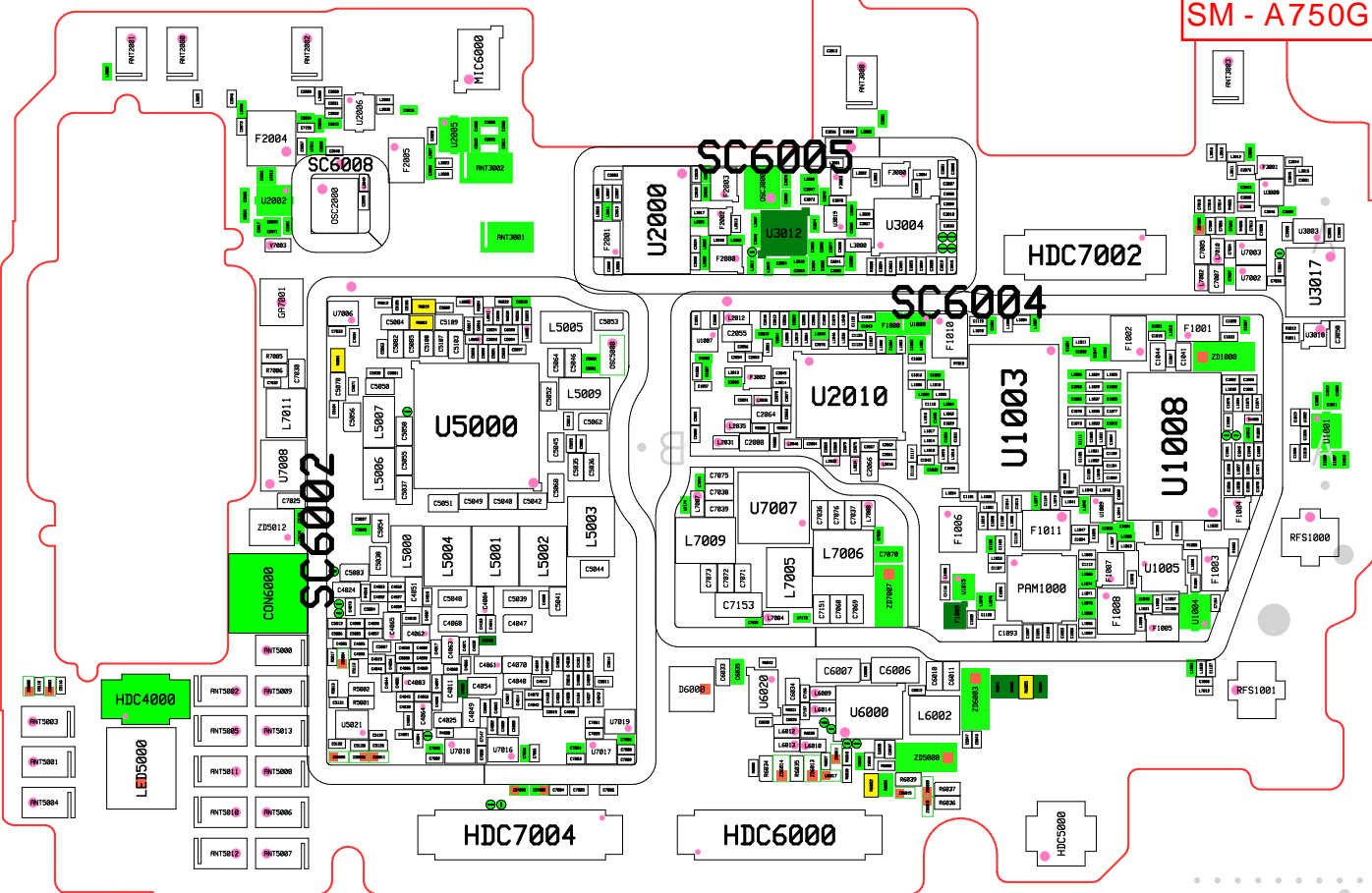
SC6003

HDC7001

CON6001

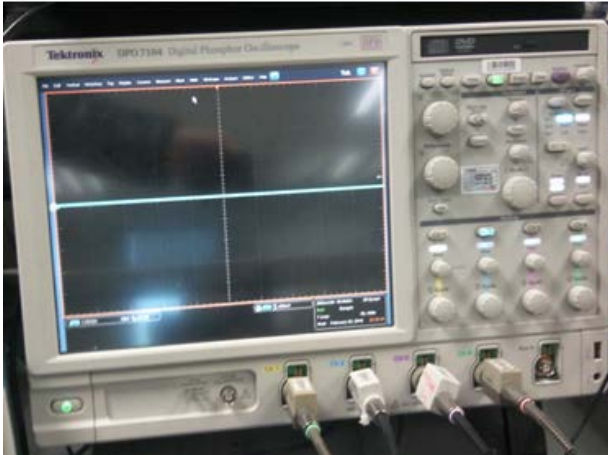
PNT2016

JTAG4000



8. Level 3 Repair

8-3. Flow chart of Troubleshooting.



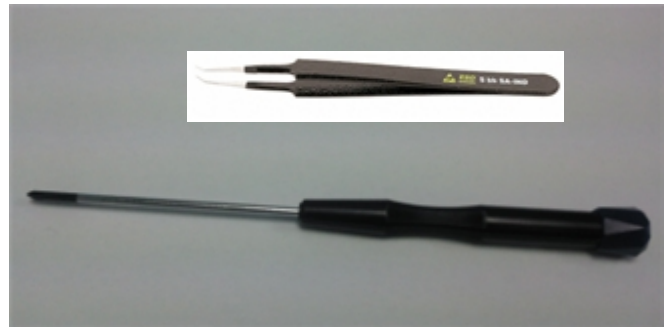
Oscilloscope



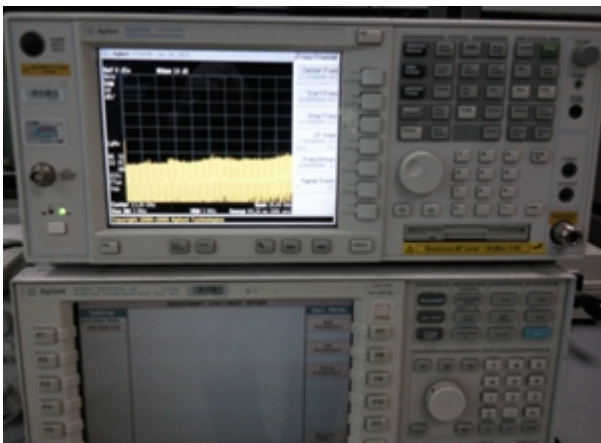
Digital Multimeter



Power Supply



+ driver, ESD Safe Tweezer



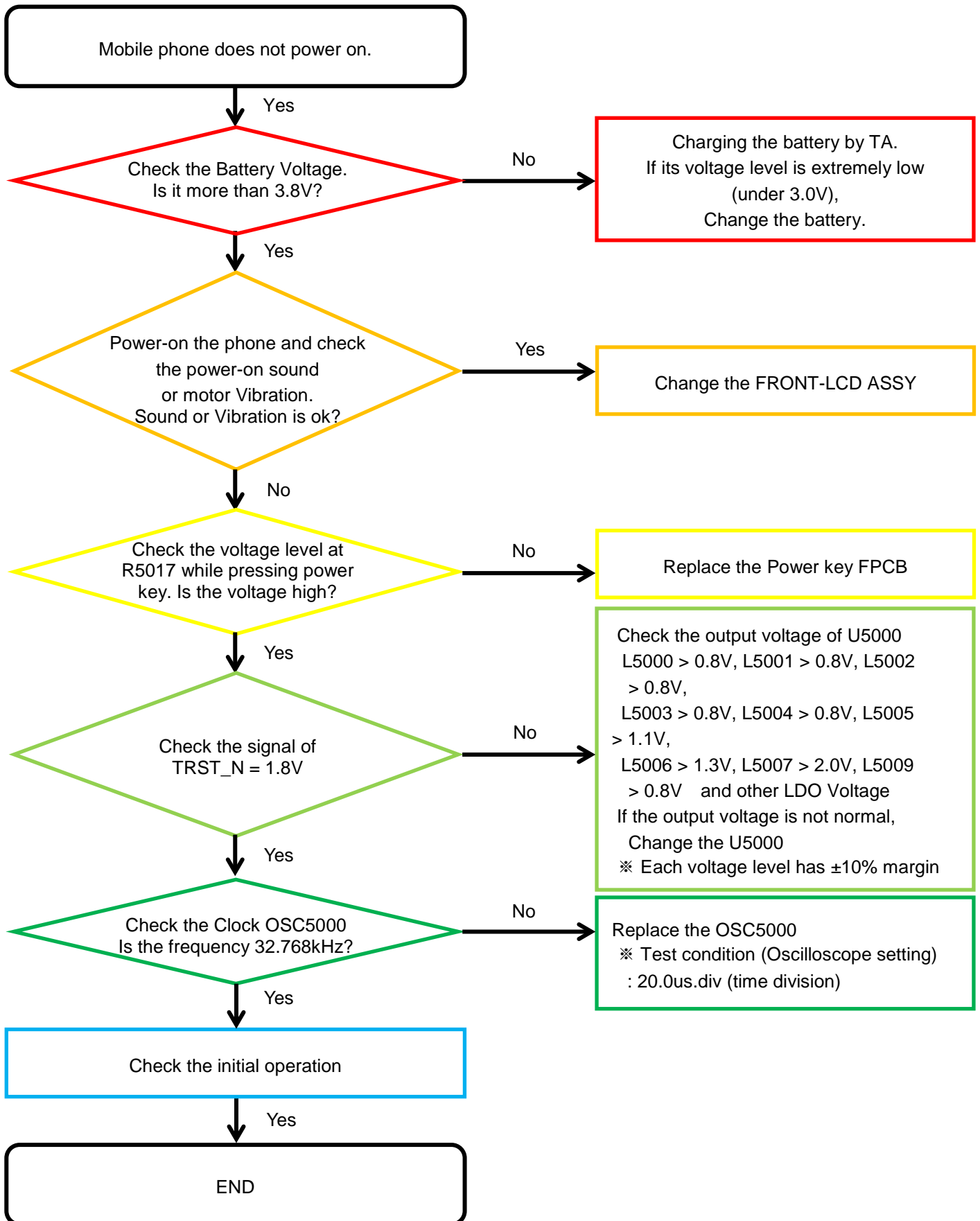
8960 & Spectrum Analyzer



Soldering iron

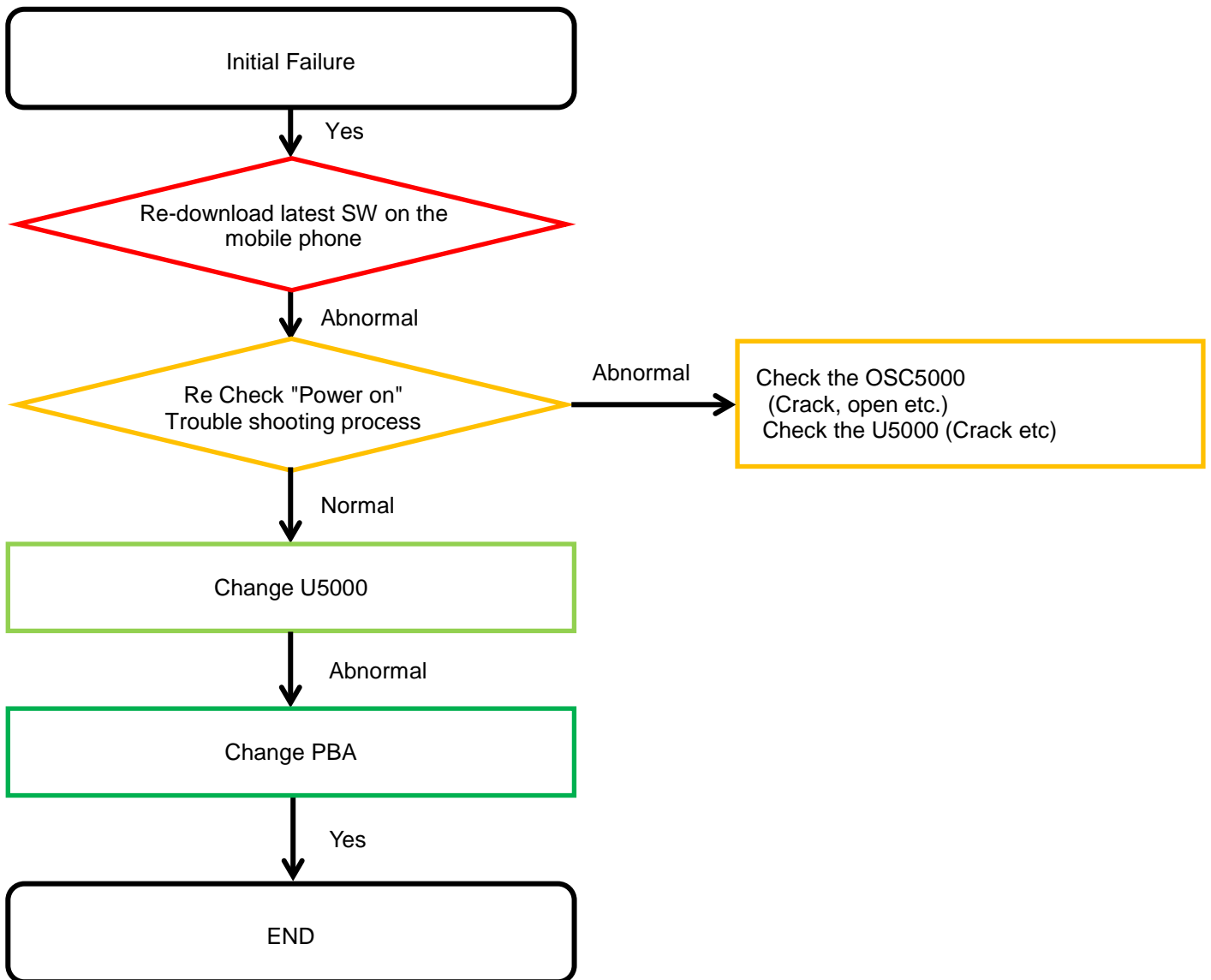
8. Level 3 Repair

8-4-1. Power On



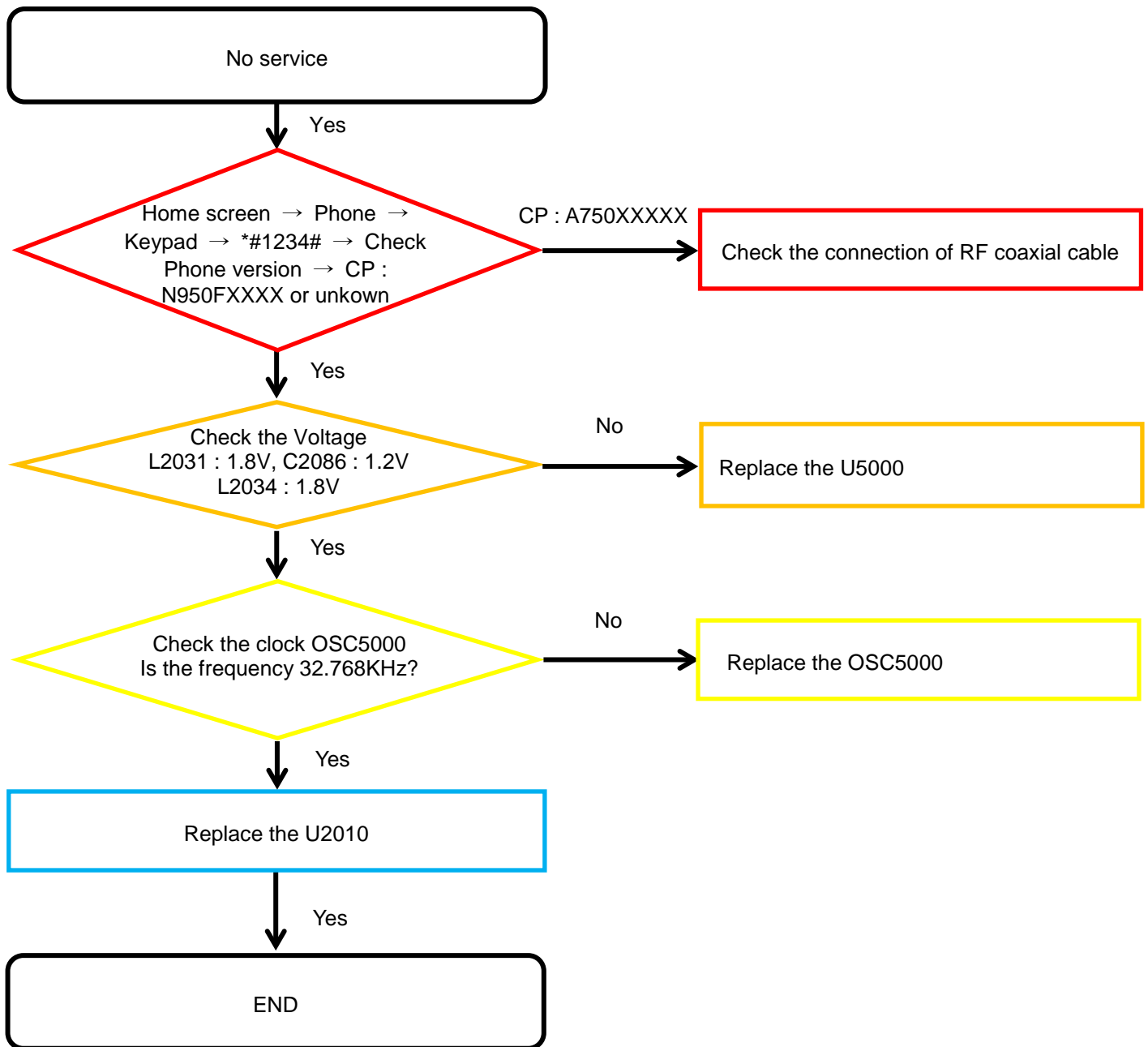
8. Level 3 Repair

8-4-2. Initial



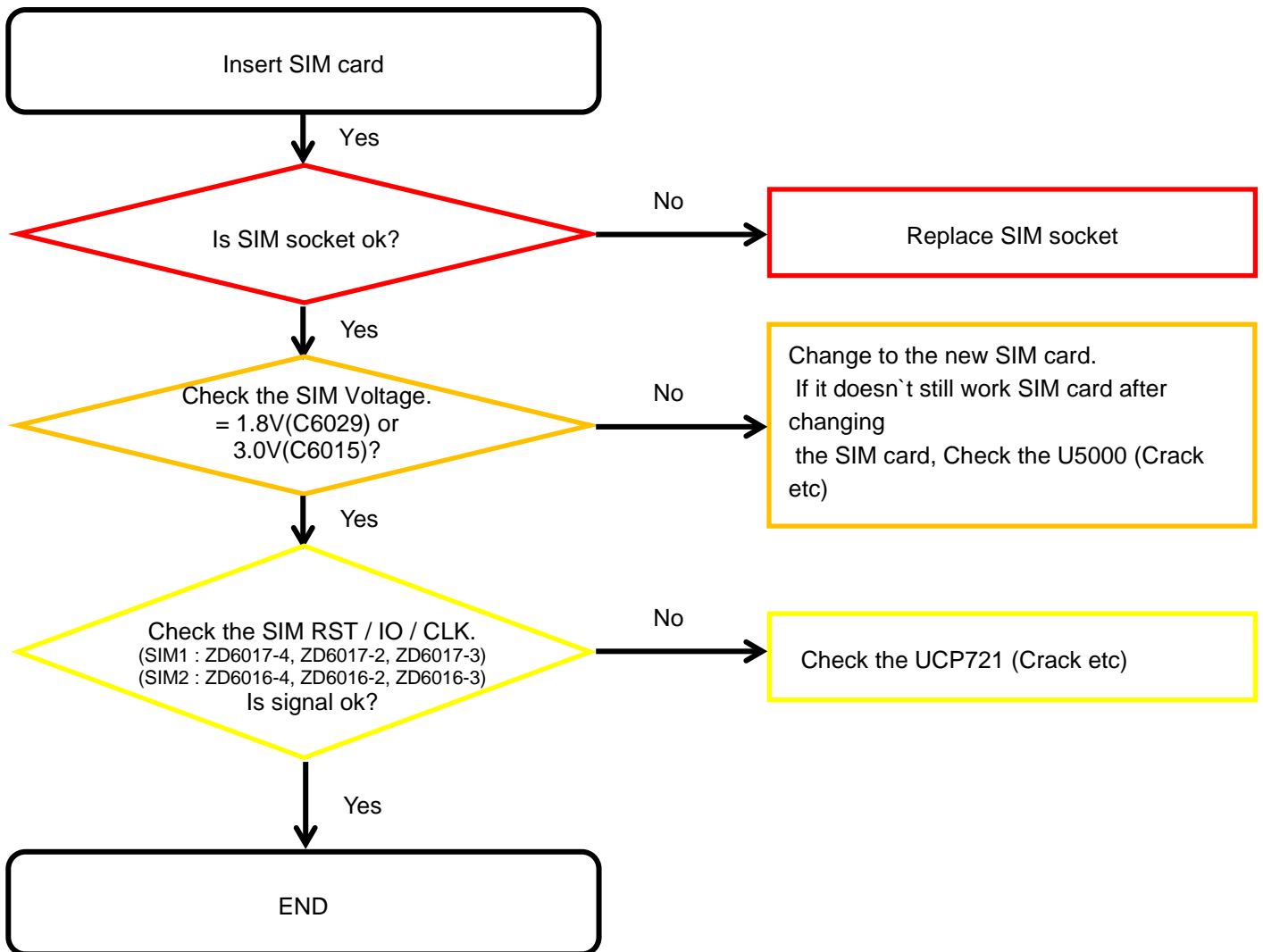
8. Level 3 Repair

8-4-3. No Service



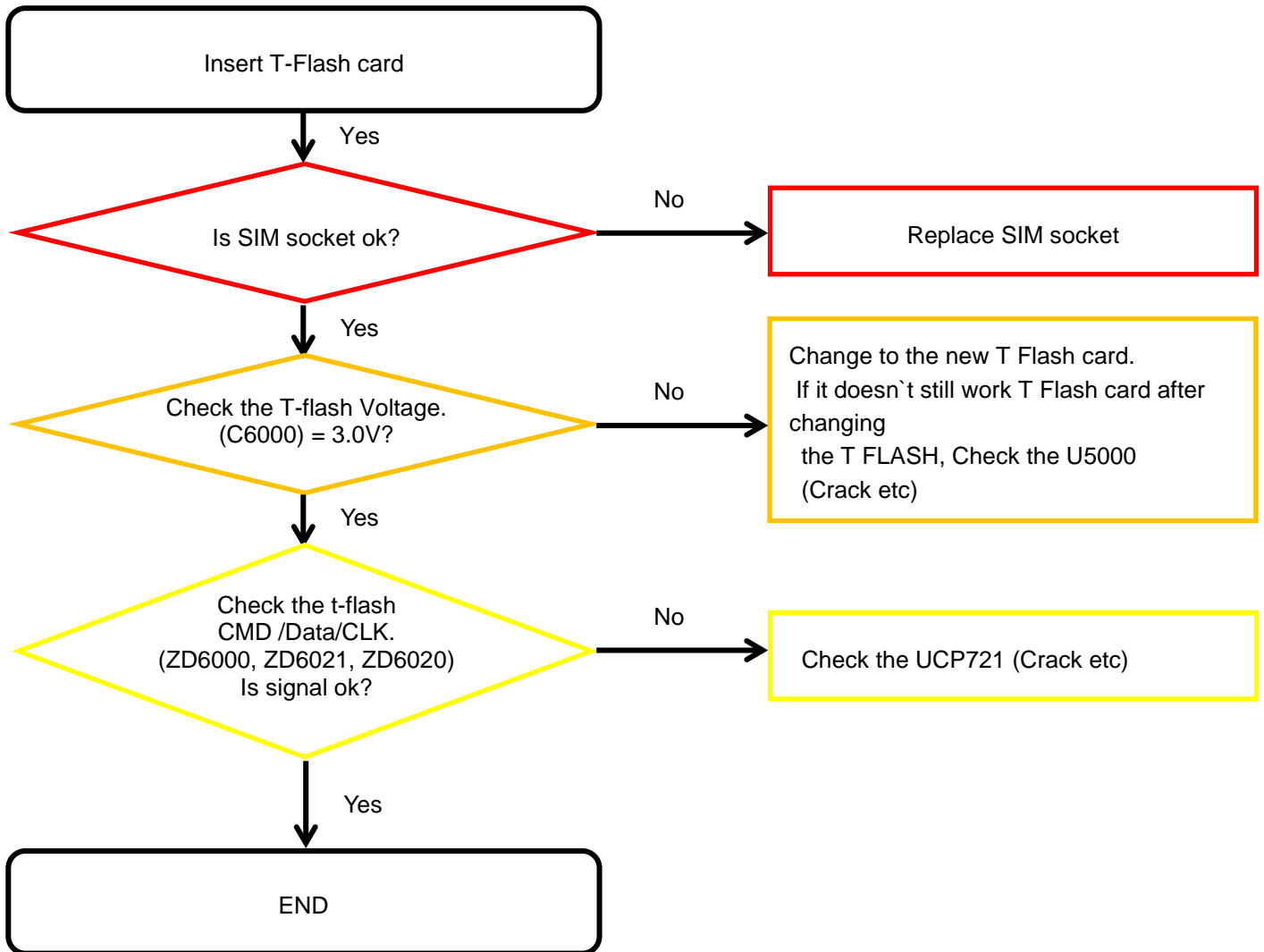
8. Level 3 Repair

8-4-4. SIM Part



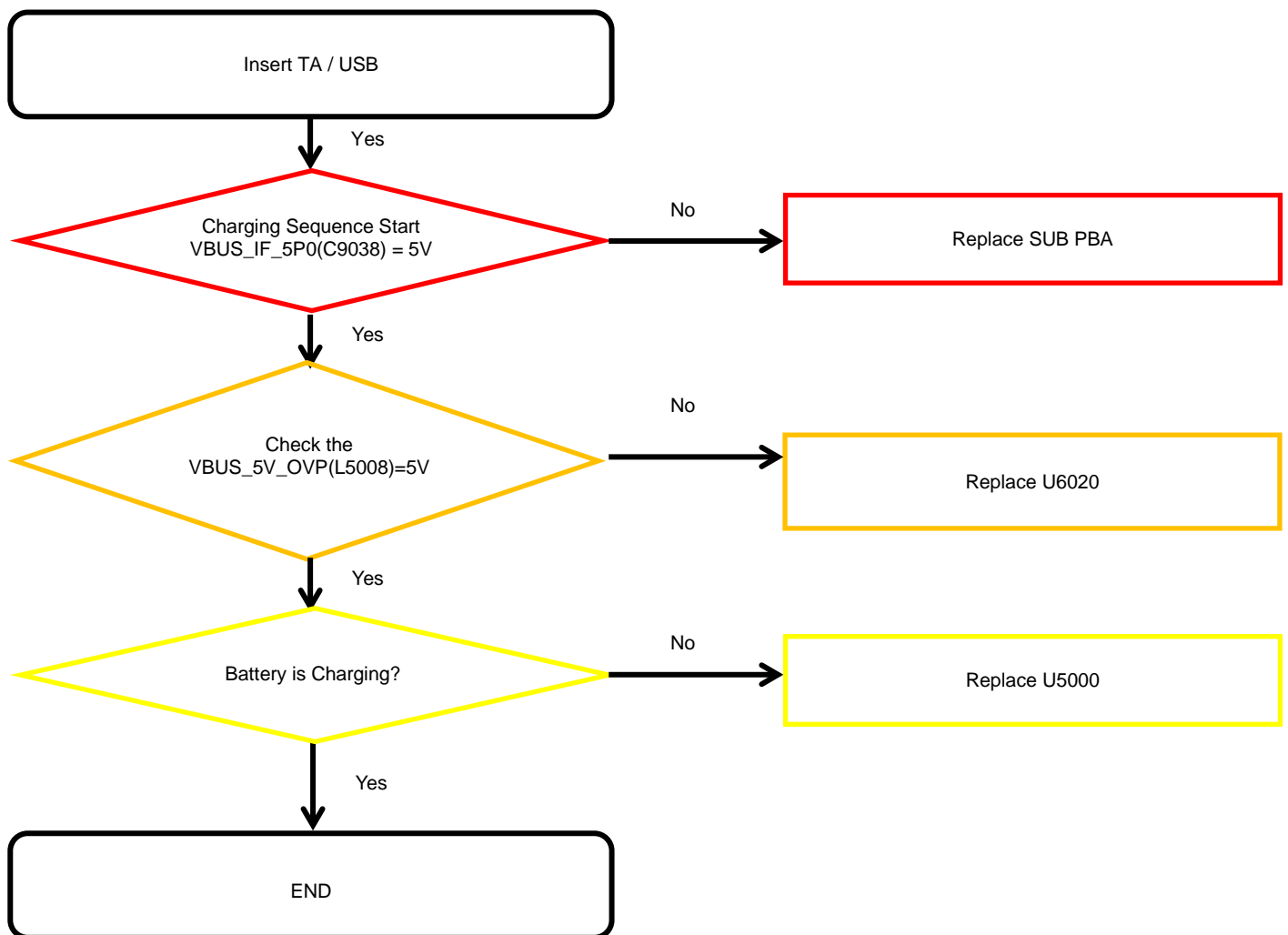
8. Level 3 Repair

8-4-5. T-Flash Part



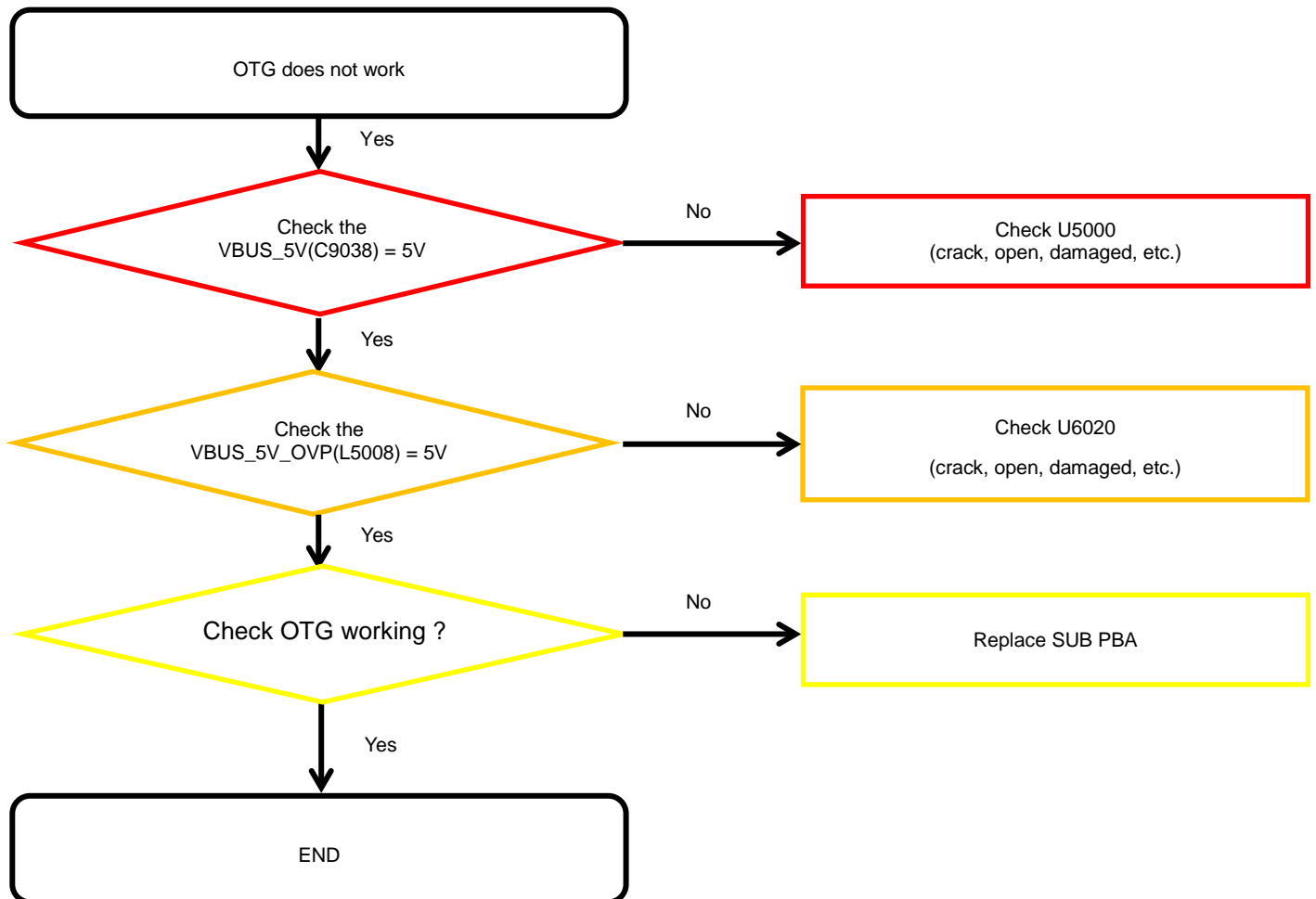
8. Level 3 Repair

8-4-6. Cable Charging Part



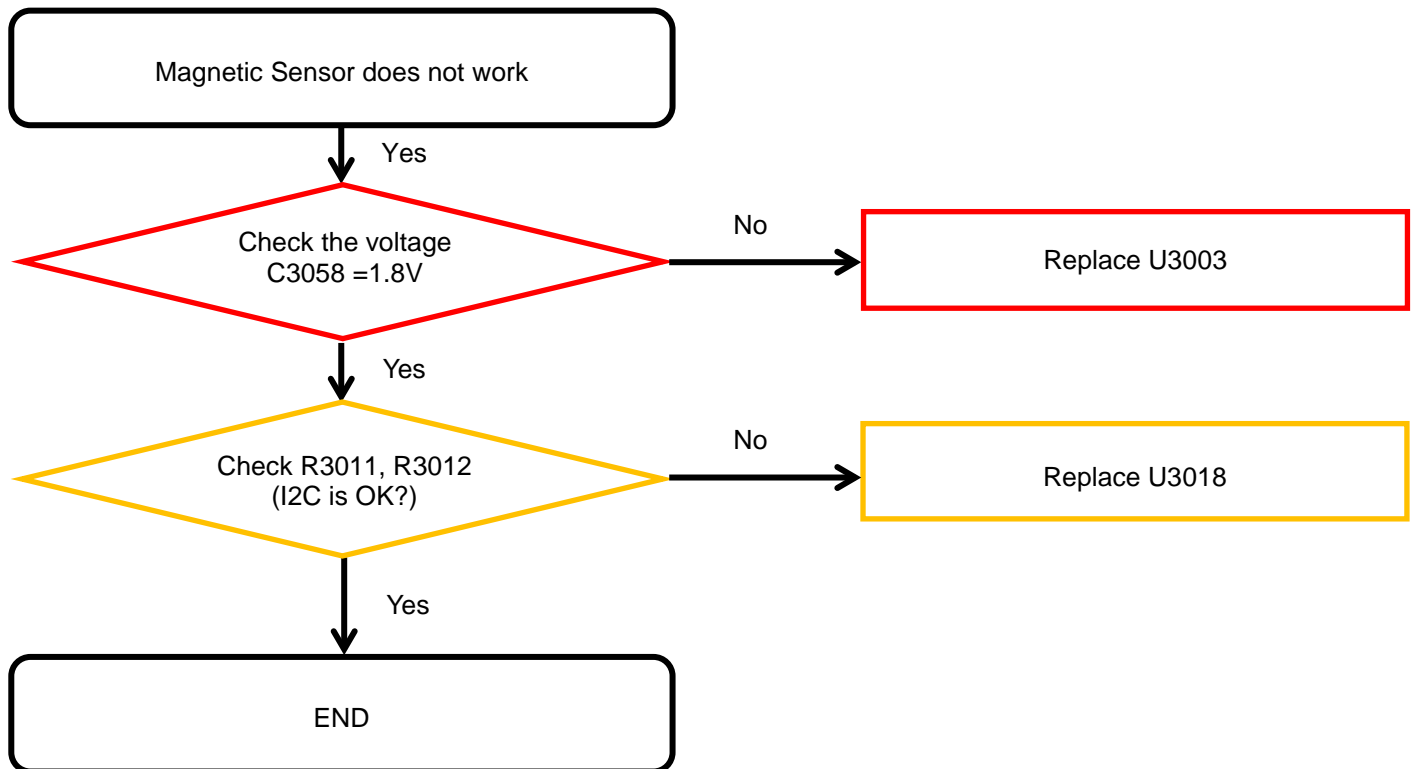
8. Level 3 Repair

8-4-7. OTG



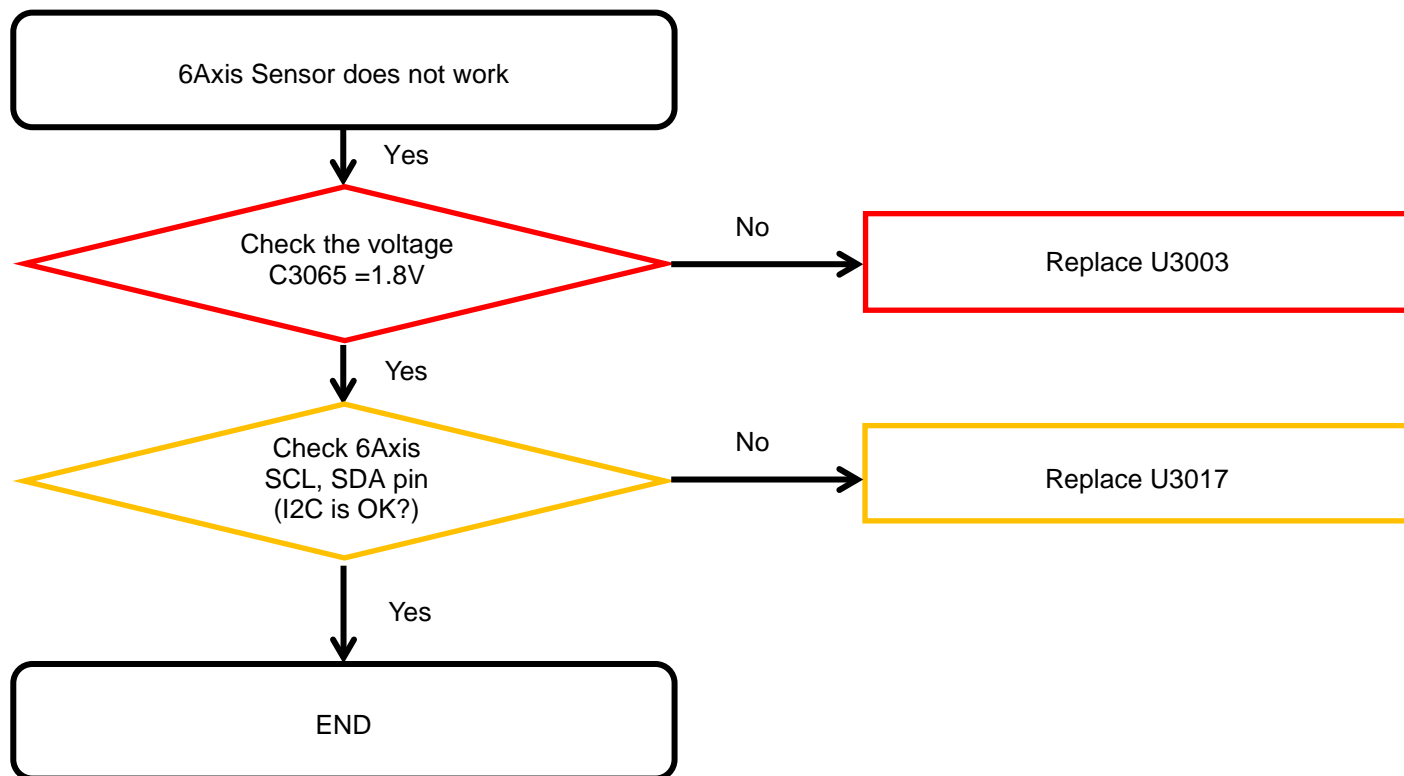
8. Level 3 Repair

8-4-8-1. Magnetic Sensor



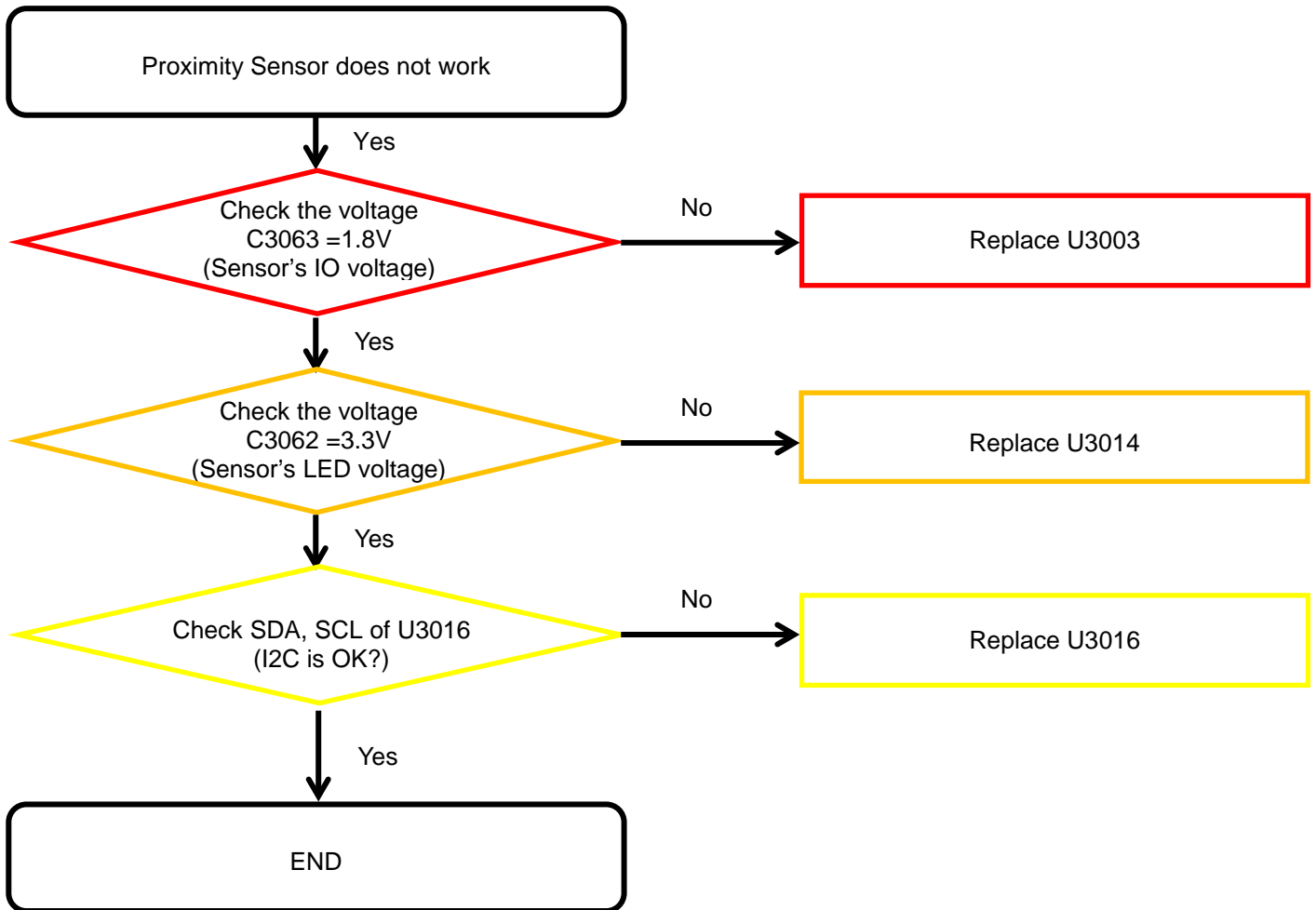
8. Level 3 Repair

8-4-8-2. 6Axis Sensor



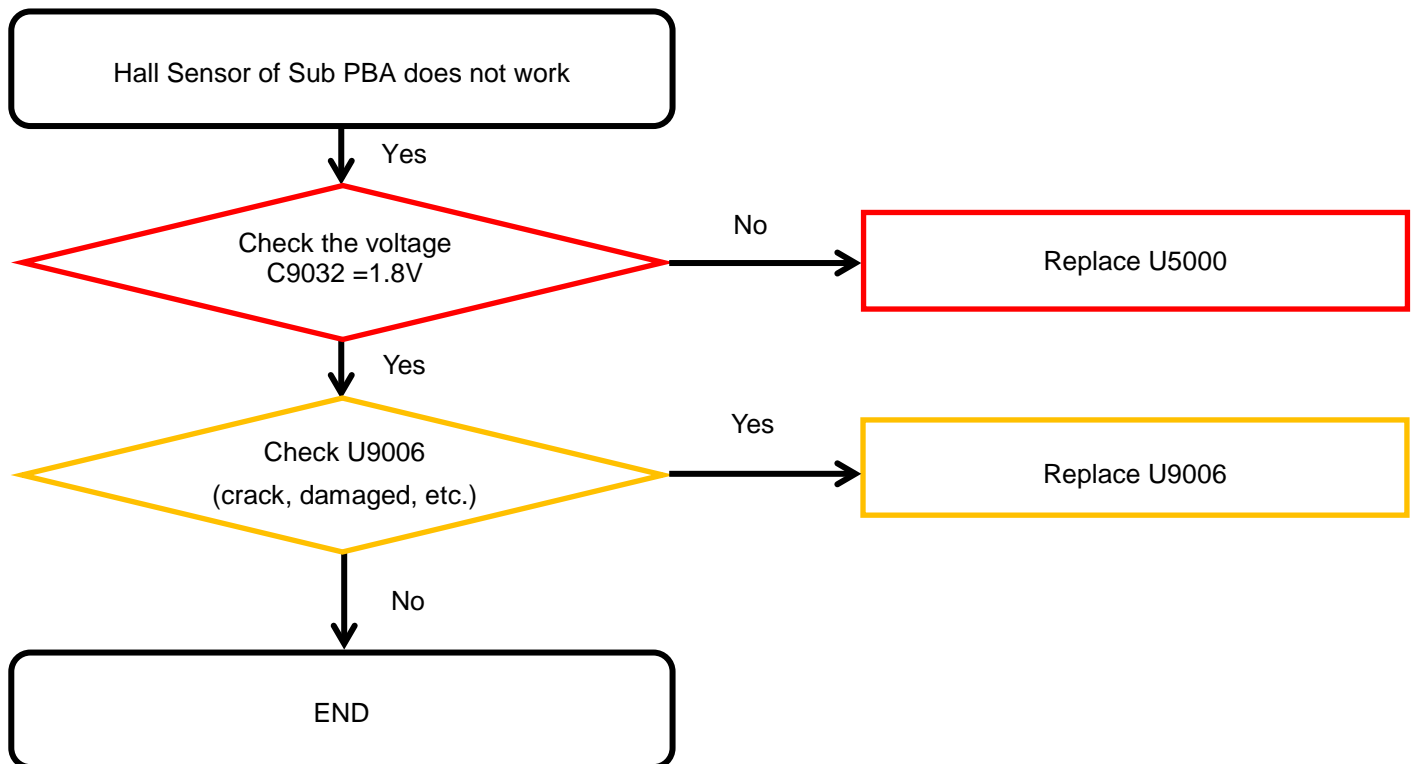
8. Level 3 Repair

8-4-8-3. Proximity



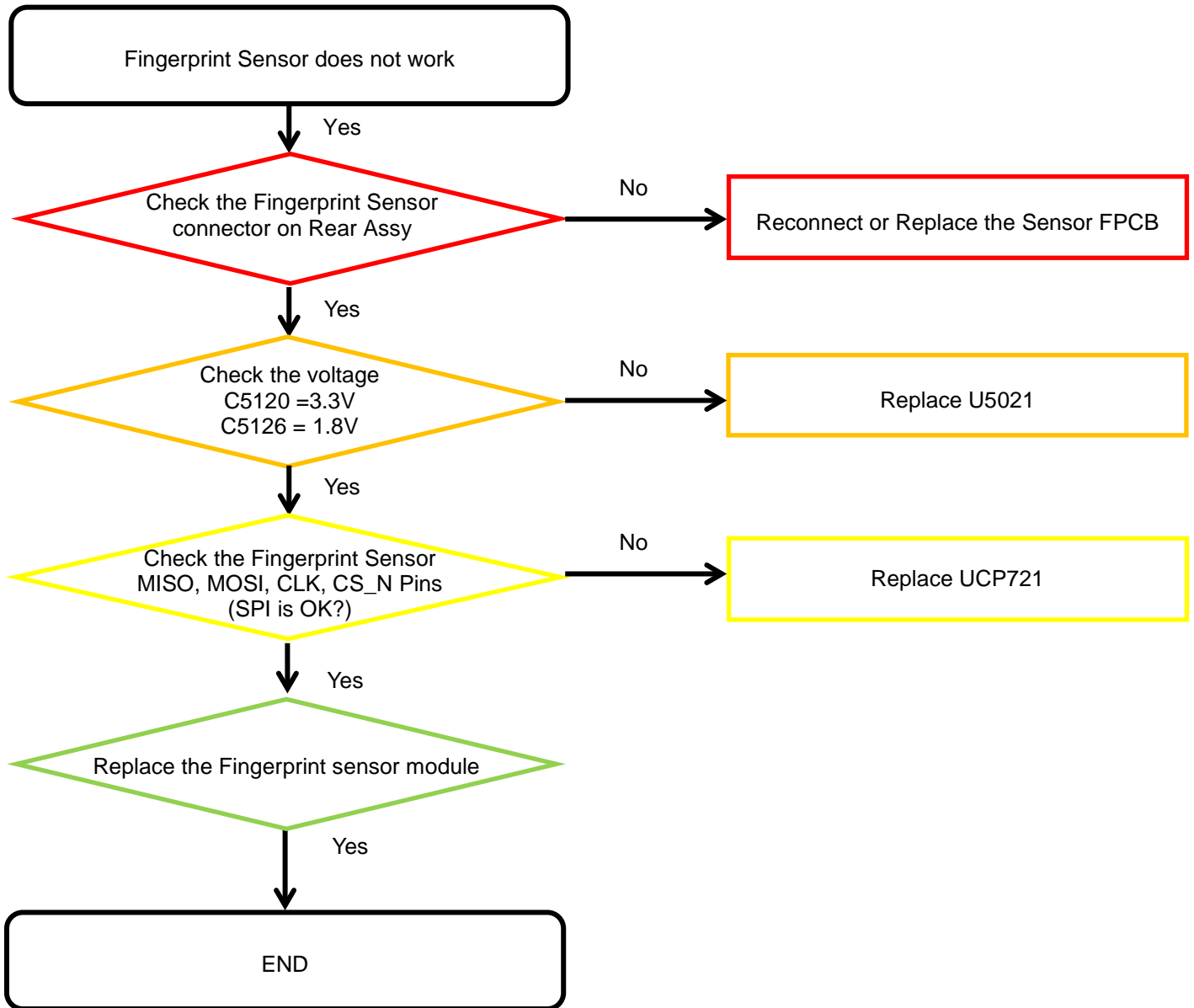
8. Level 3 Repair

8-4-8-4. Hall Sensor



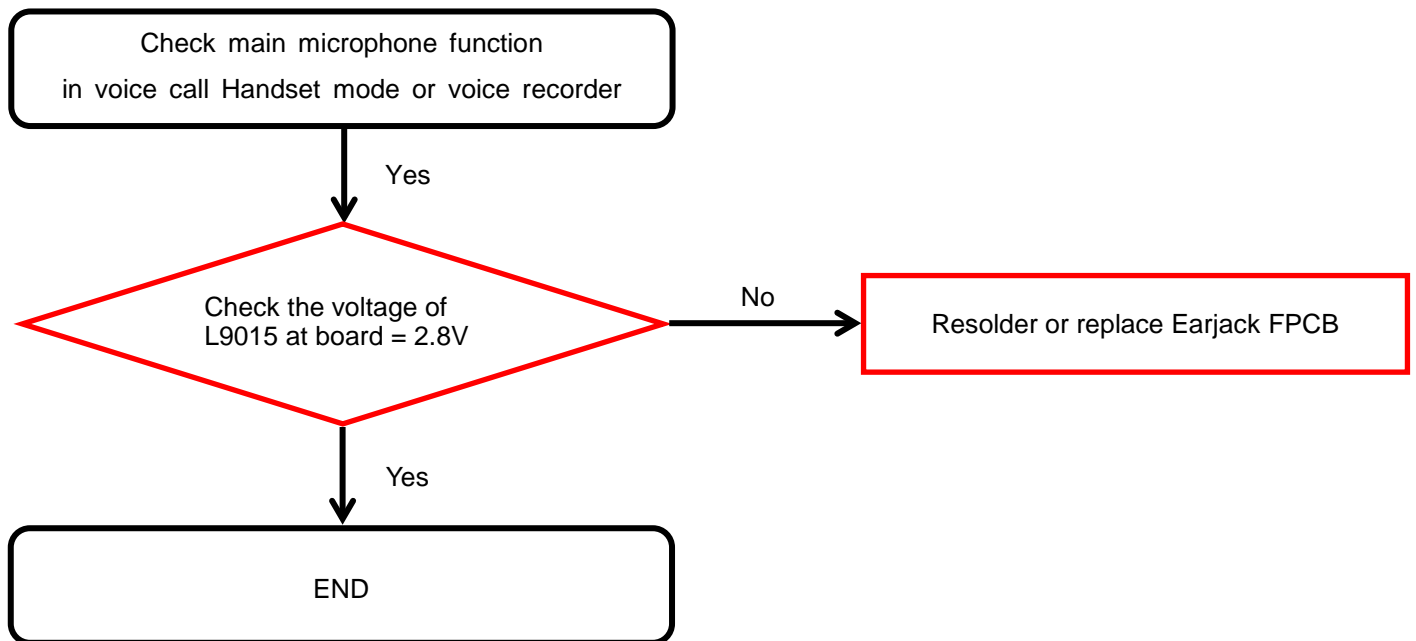
8. Level 3 Repair

8-4-8-5. Fingerprint Sensor



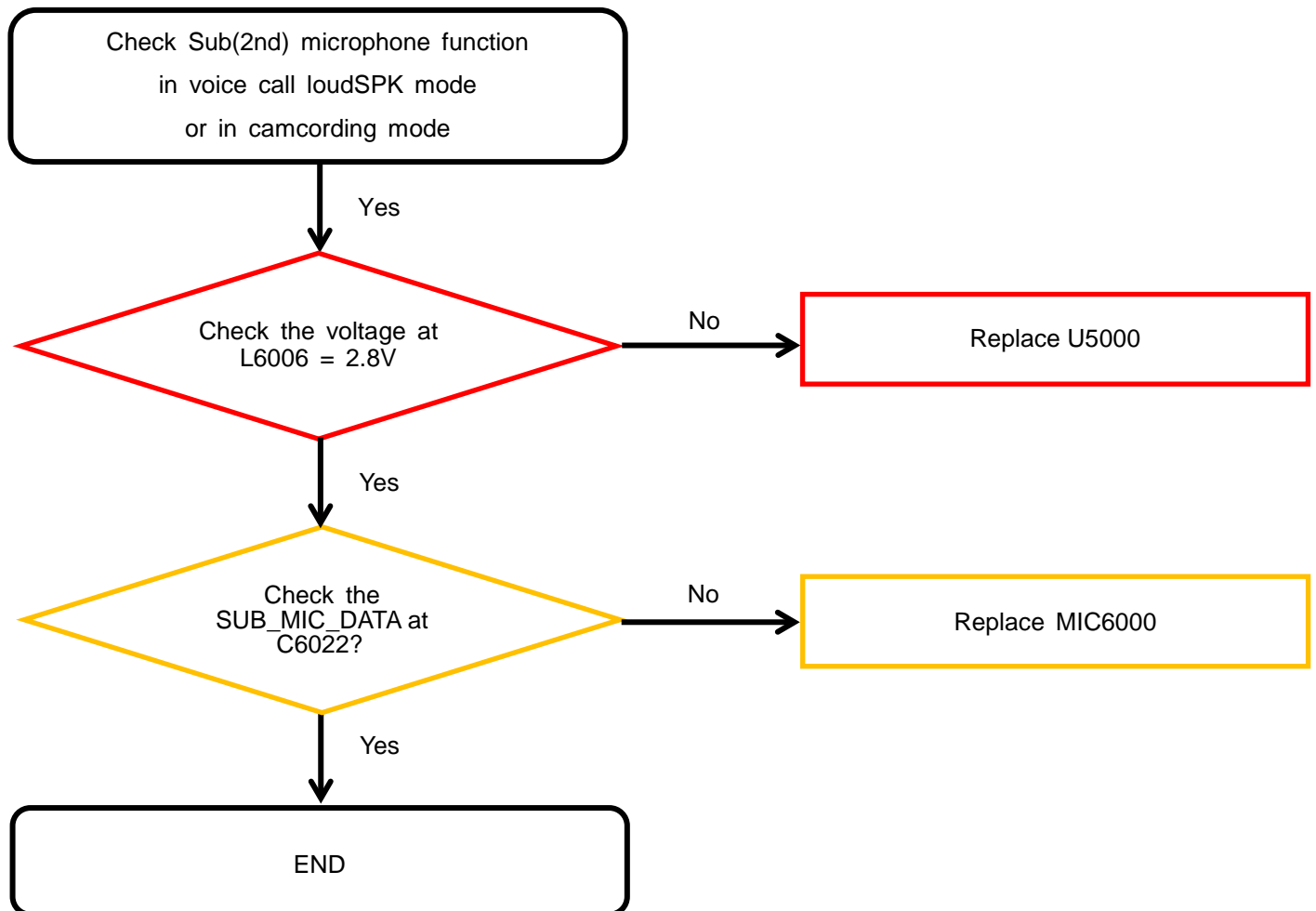
8. Level 3 Repair

8-4-9-1. Microphone Part - Main MIC



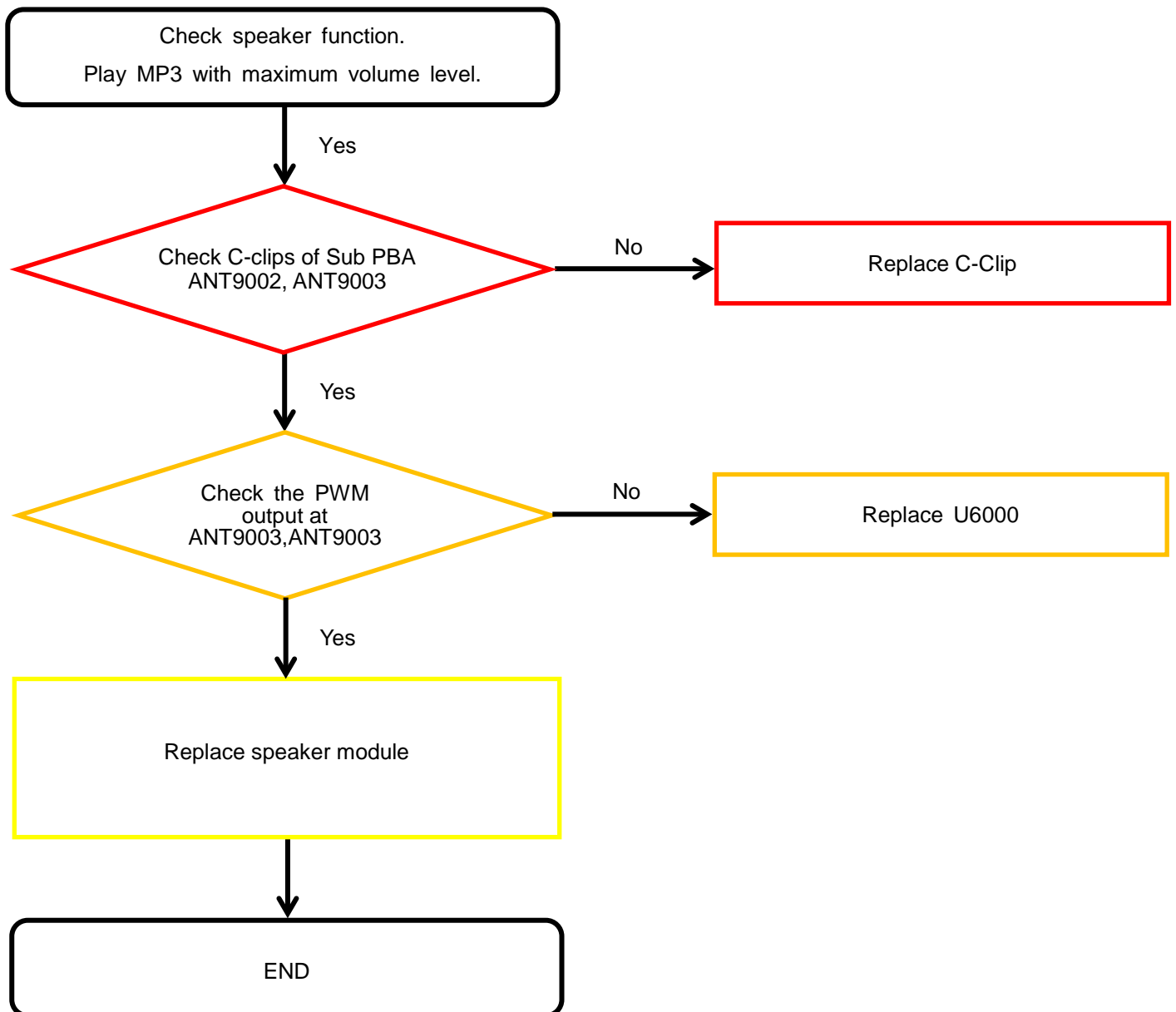
8. Level 3 Repair

8-4-9-2. Microphone Part - Sub(2nd) MIC



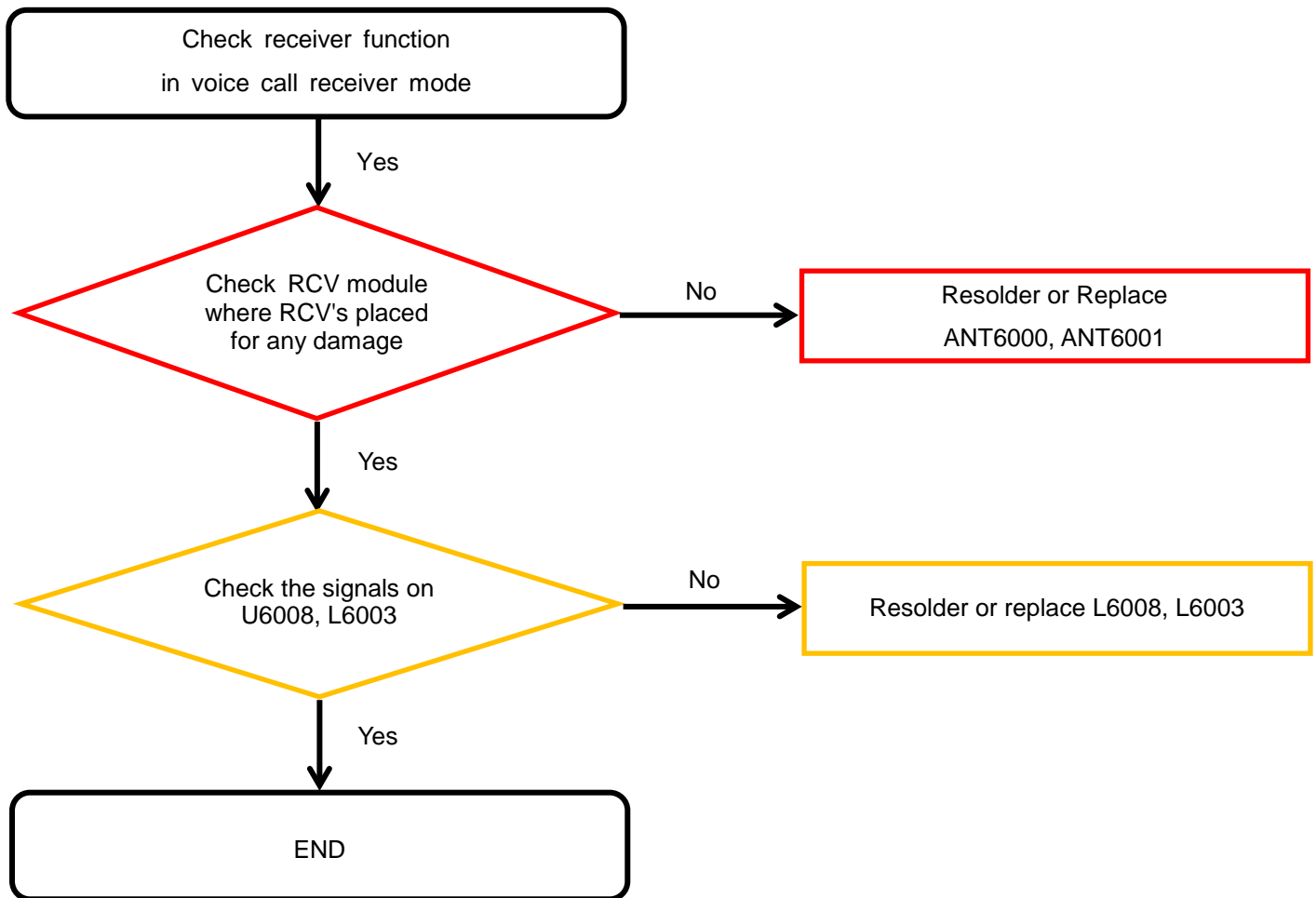
8. Level 3 Repair

8-4-10. Speaker Part



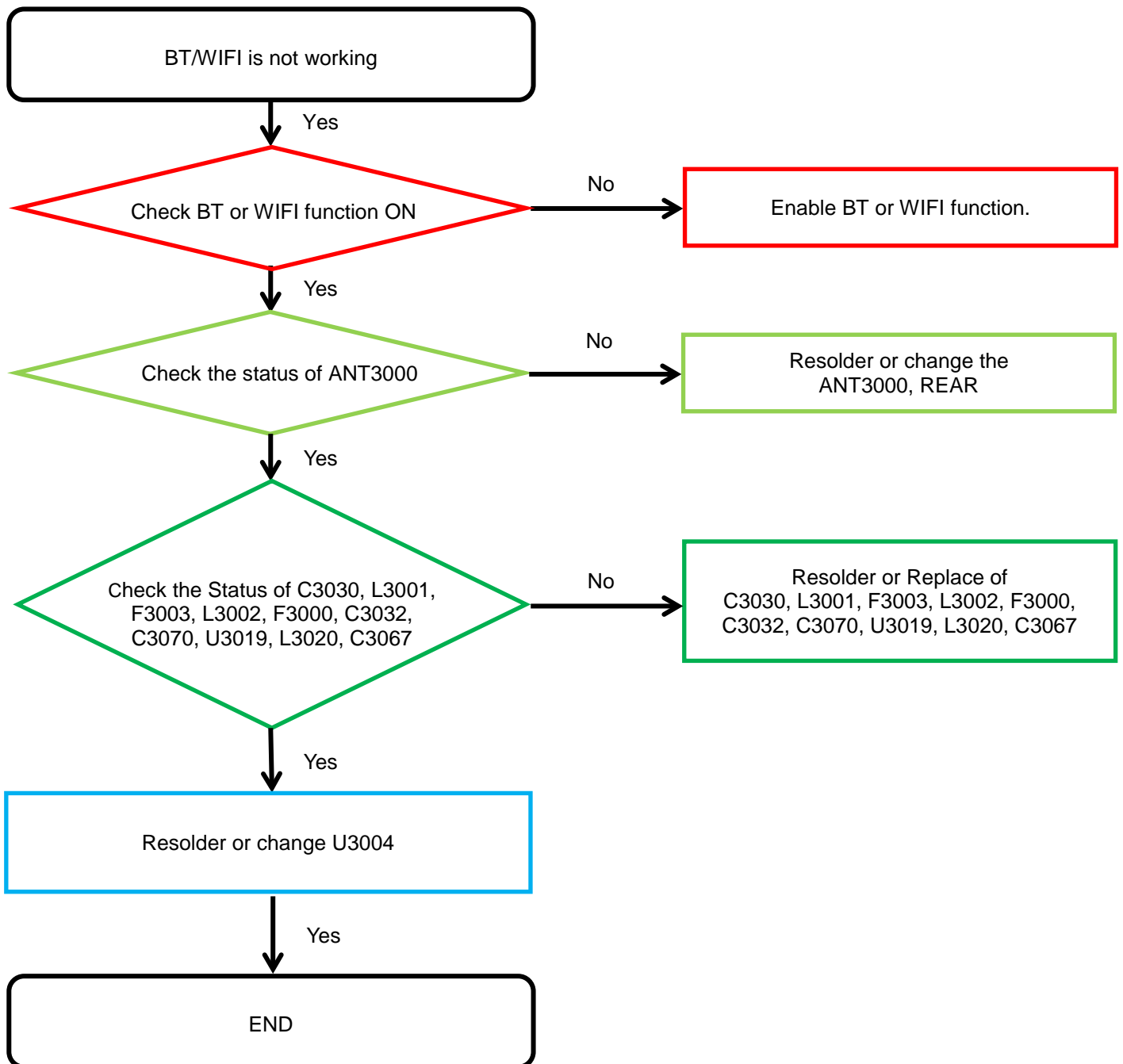
8. Level 3 Repair

8-4-11. Receiver Part



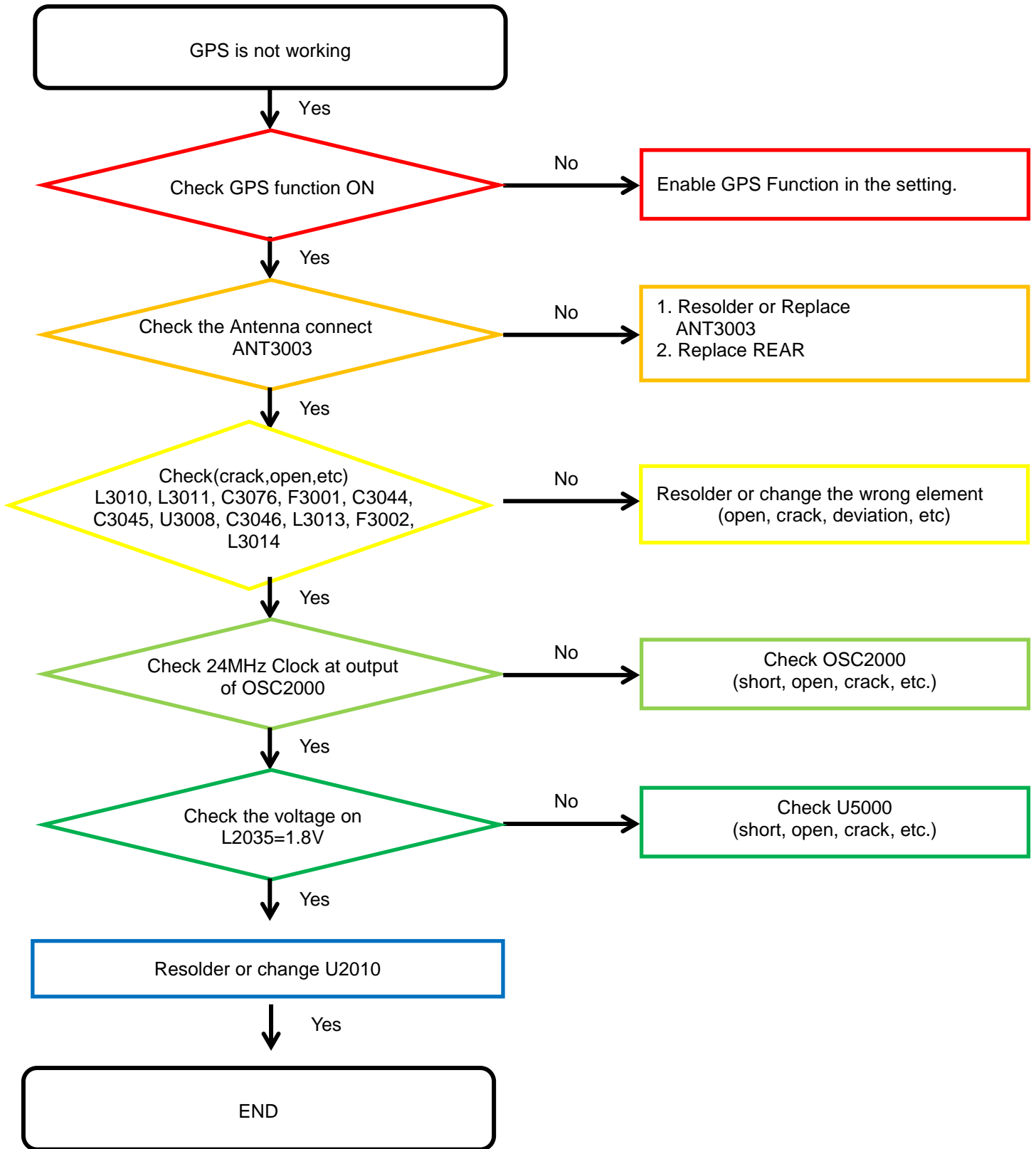
8. Level 3 Repair

8-4-12. BT/WIFI



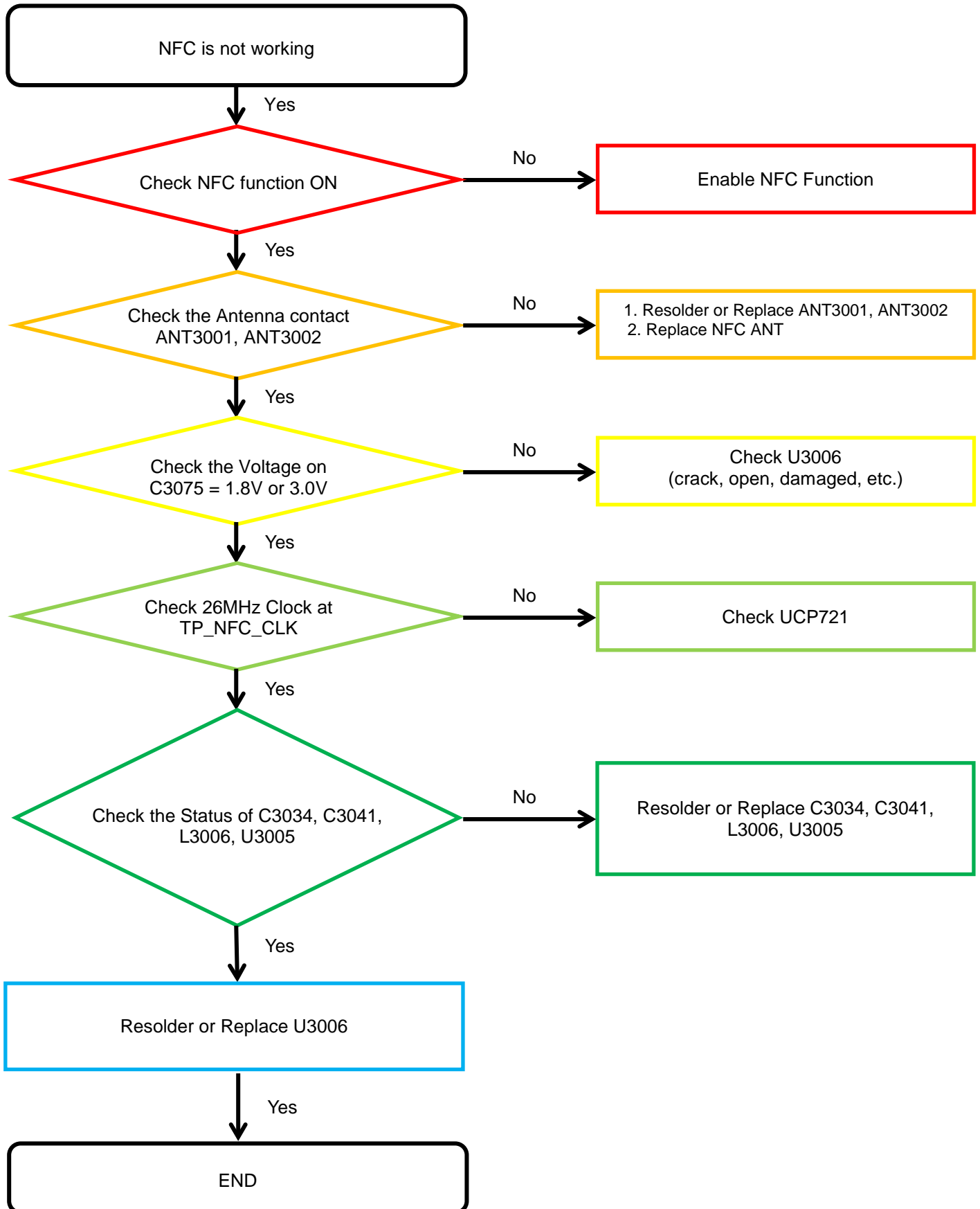
8. Level 3 Repair

8-4-13. GPS



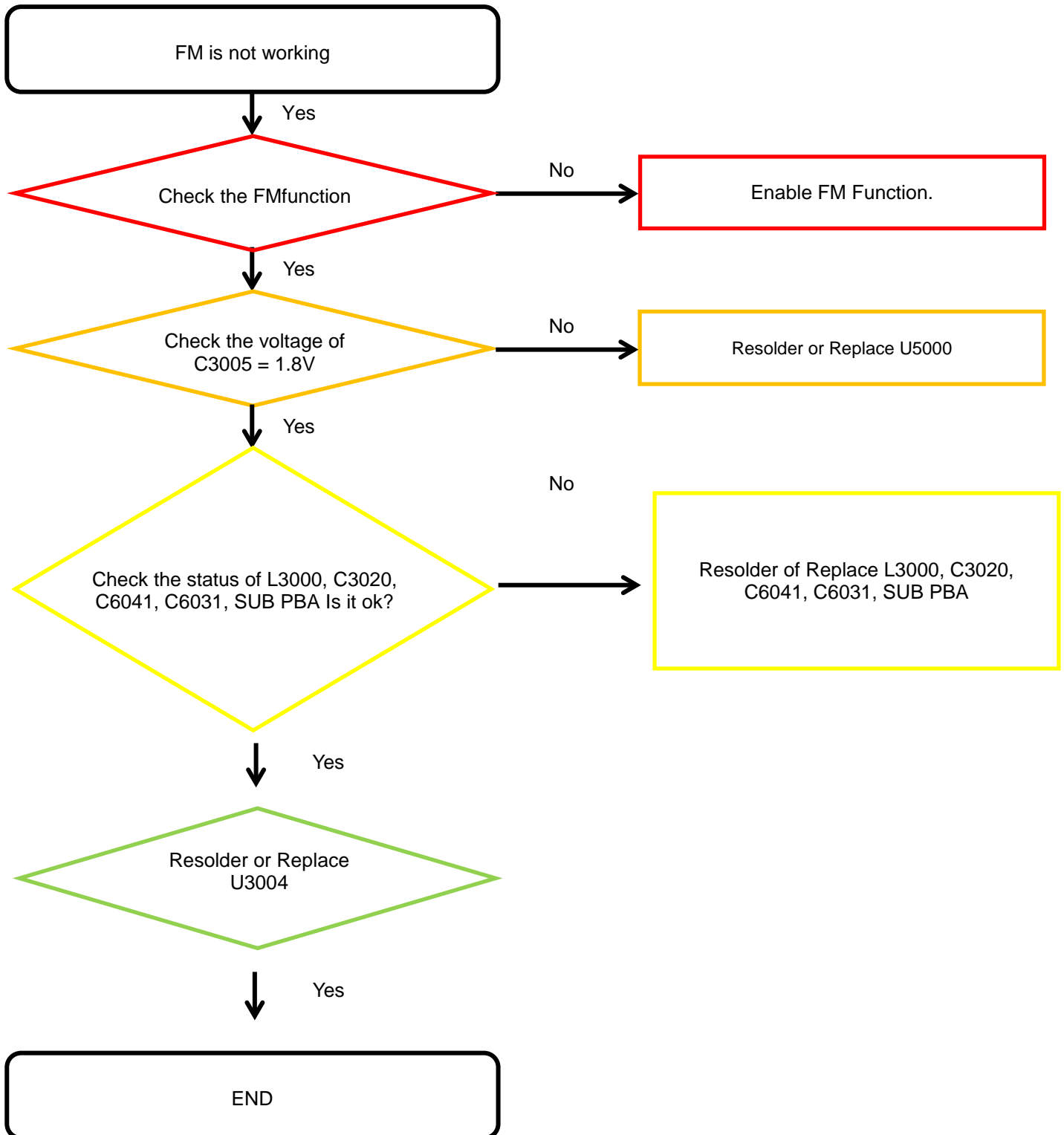
8. Level 3 Repair

8-4-14. NFC



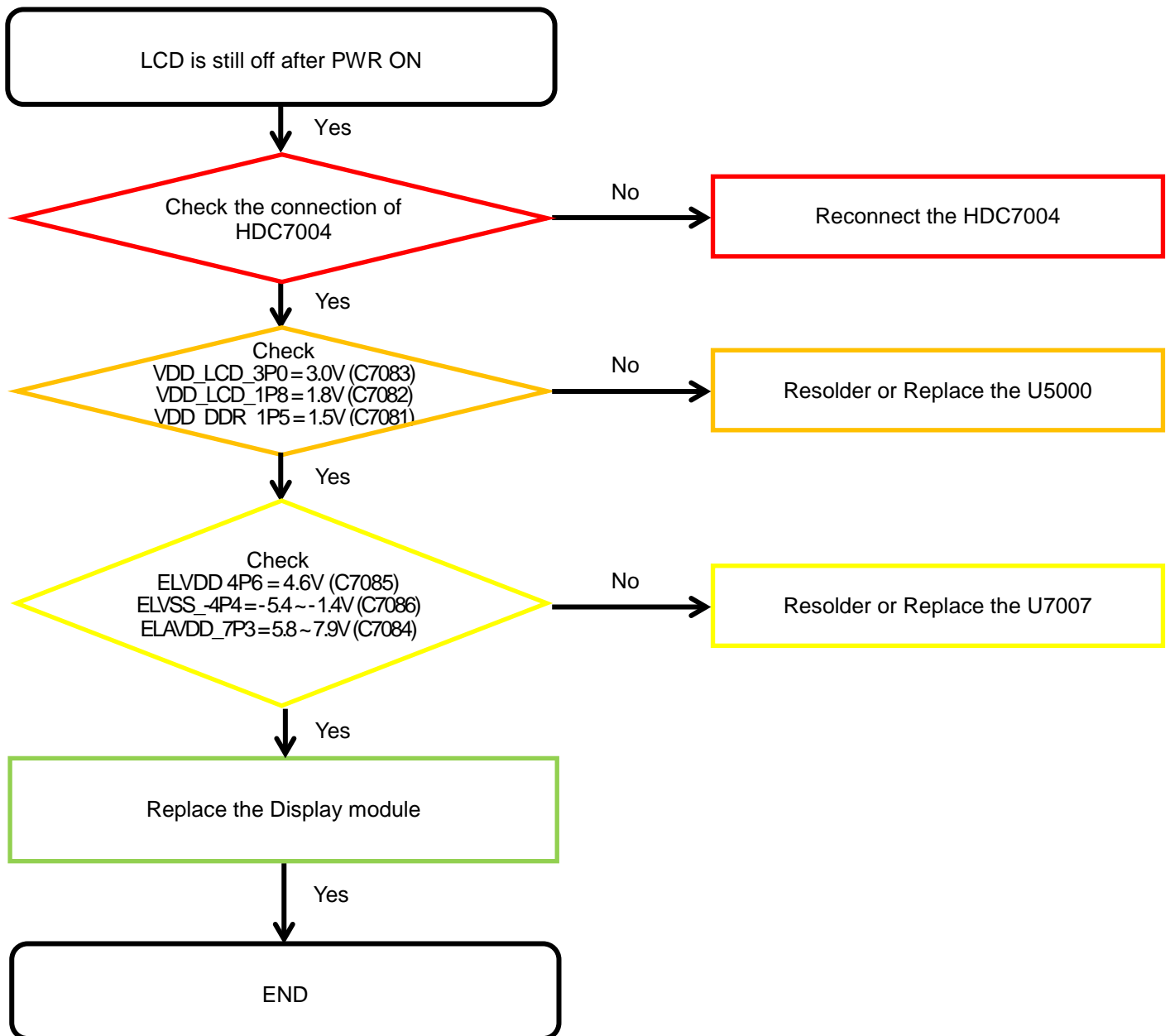
8. Level 3 Repair

8-4-15. FM radio part



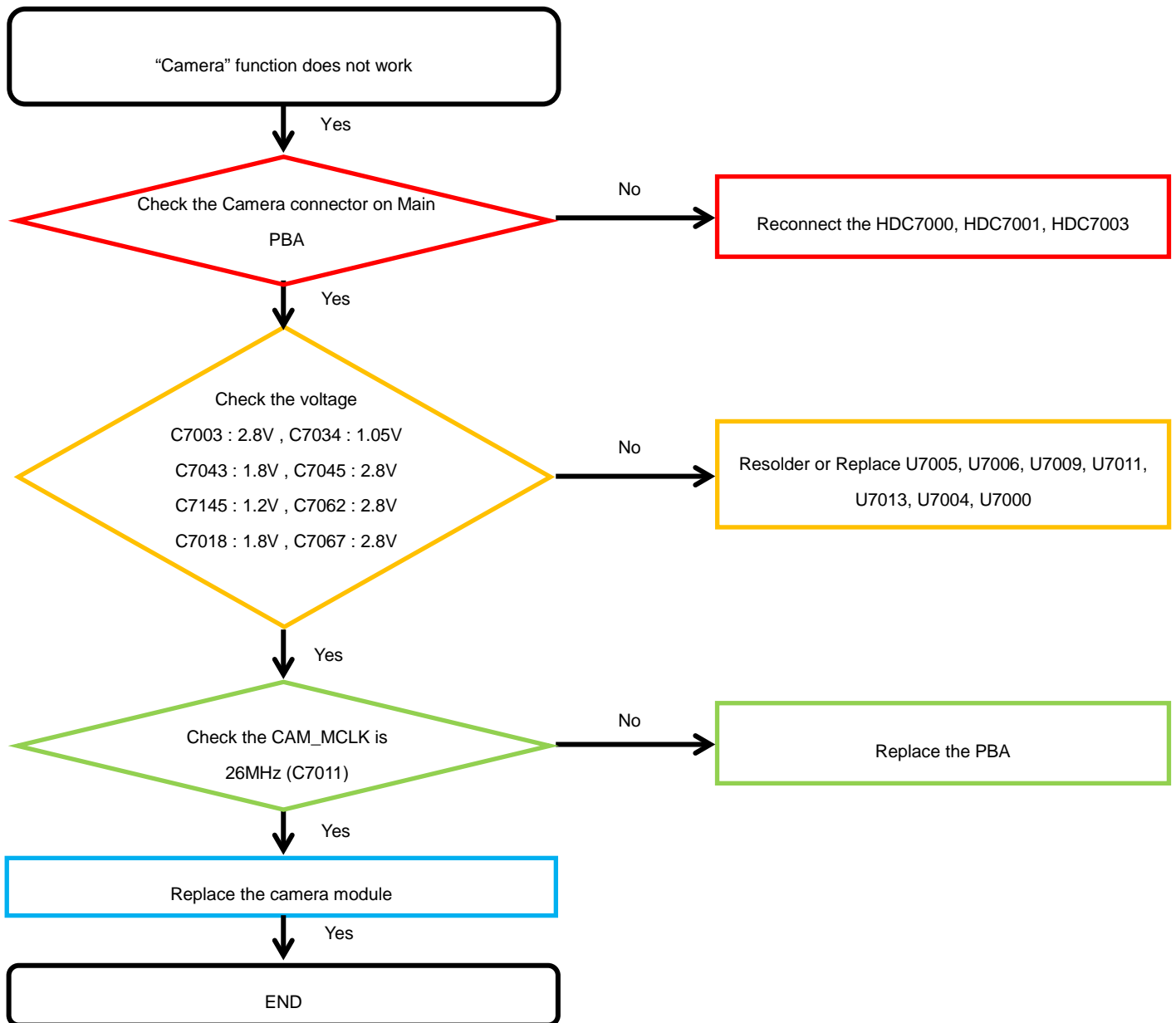
8. Level 3 Repair

8-4-16. Display



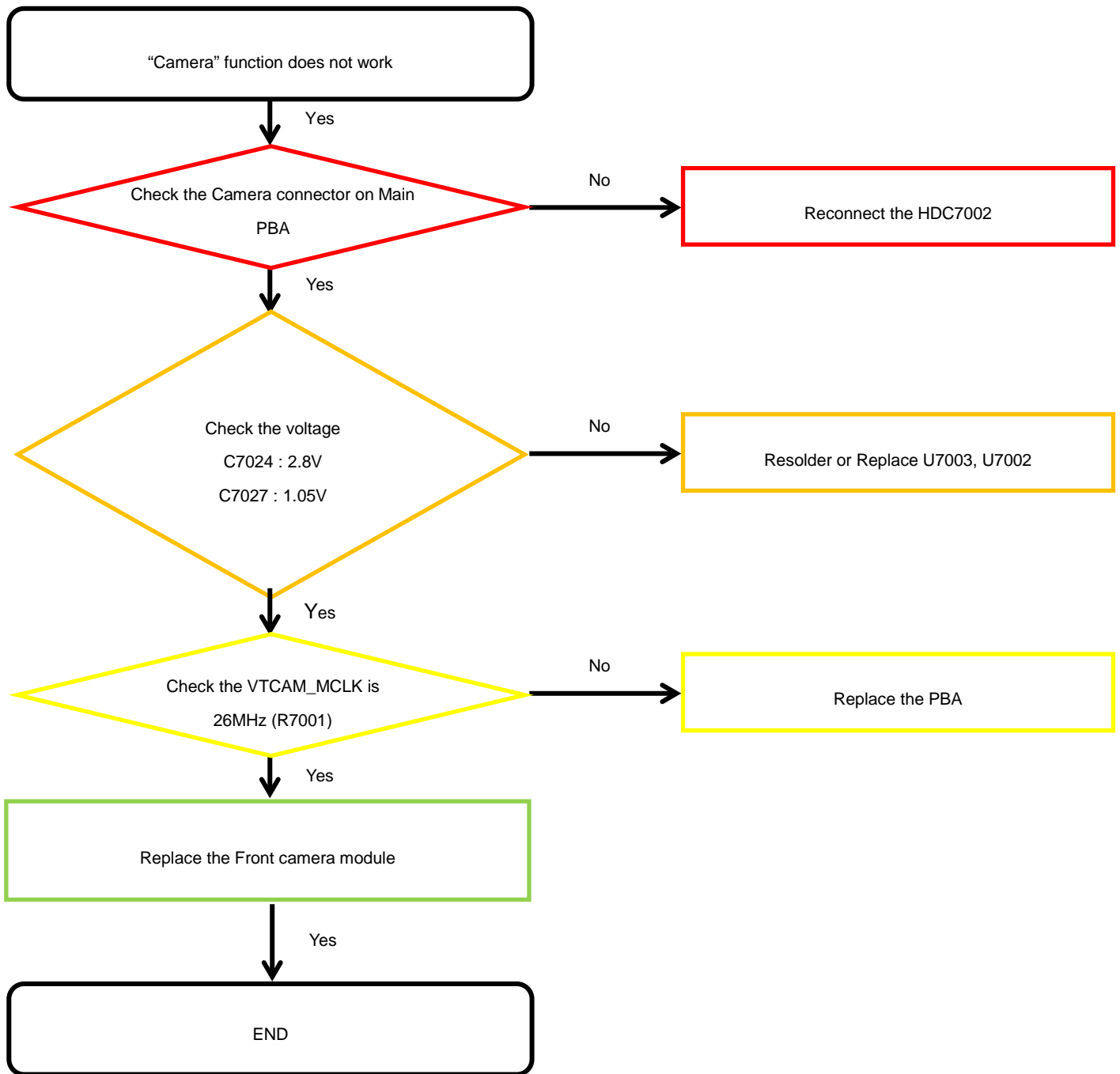
8. Level 3 Repair

8-4-17. Triple Camera



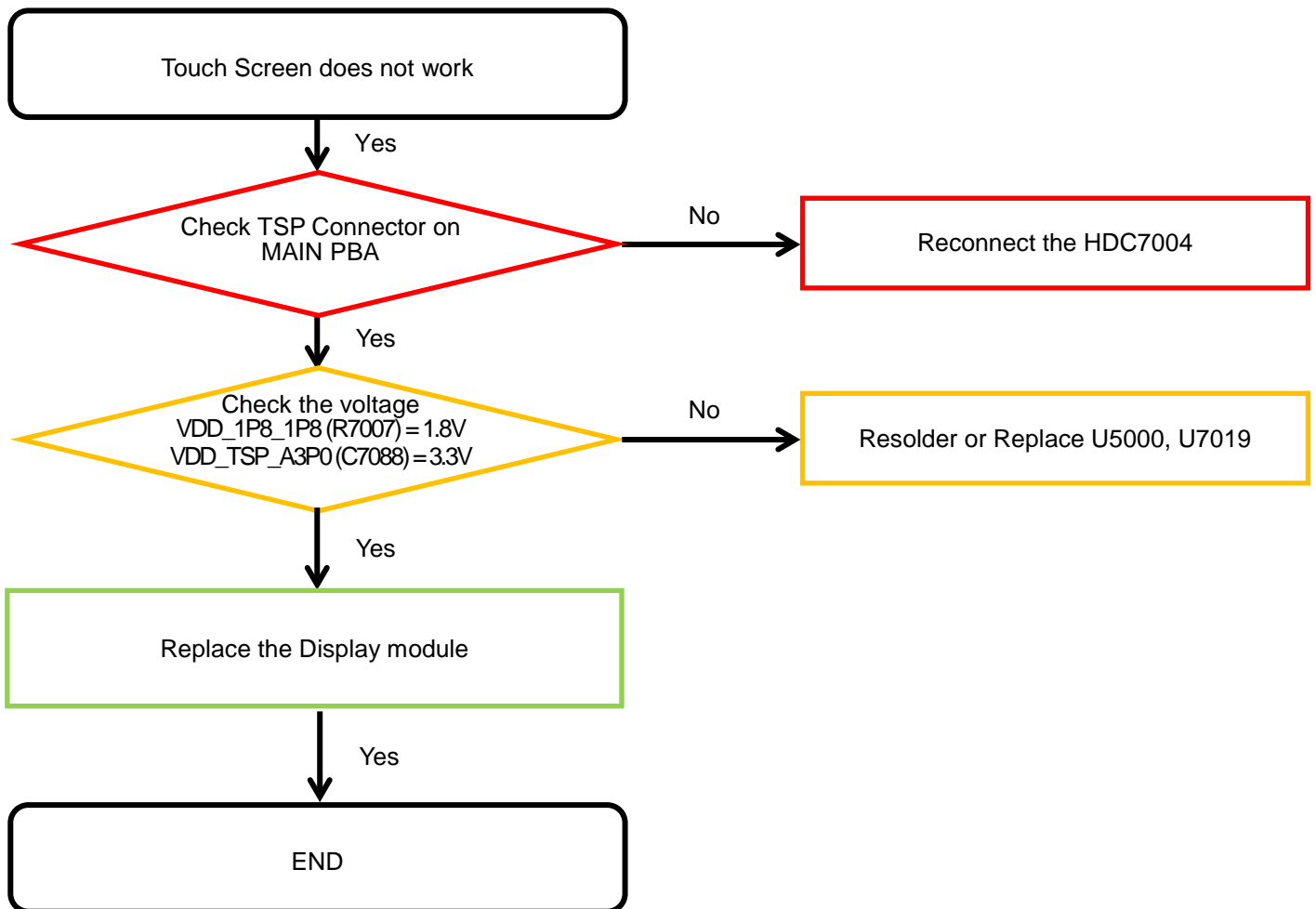
8. Level 3 Repair

8-4-18. VT CAMERA



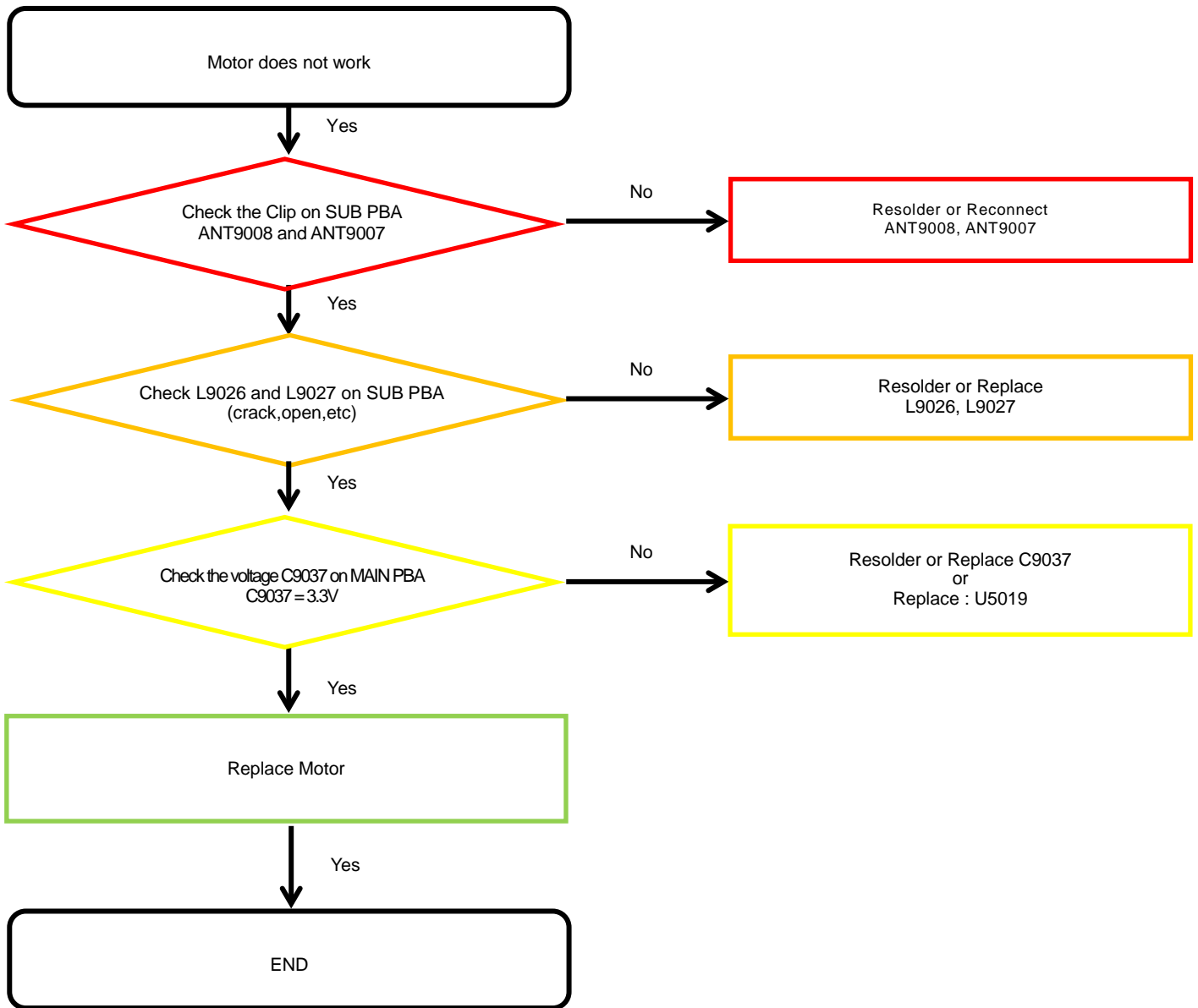
8. Level 3 Repair

8-4-19. TSP



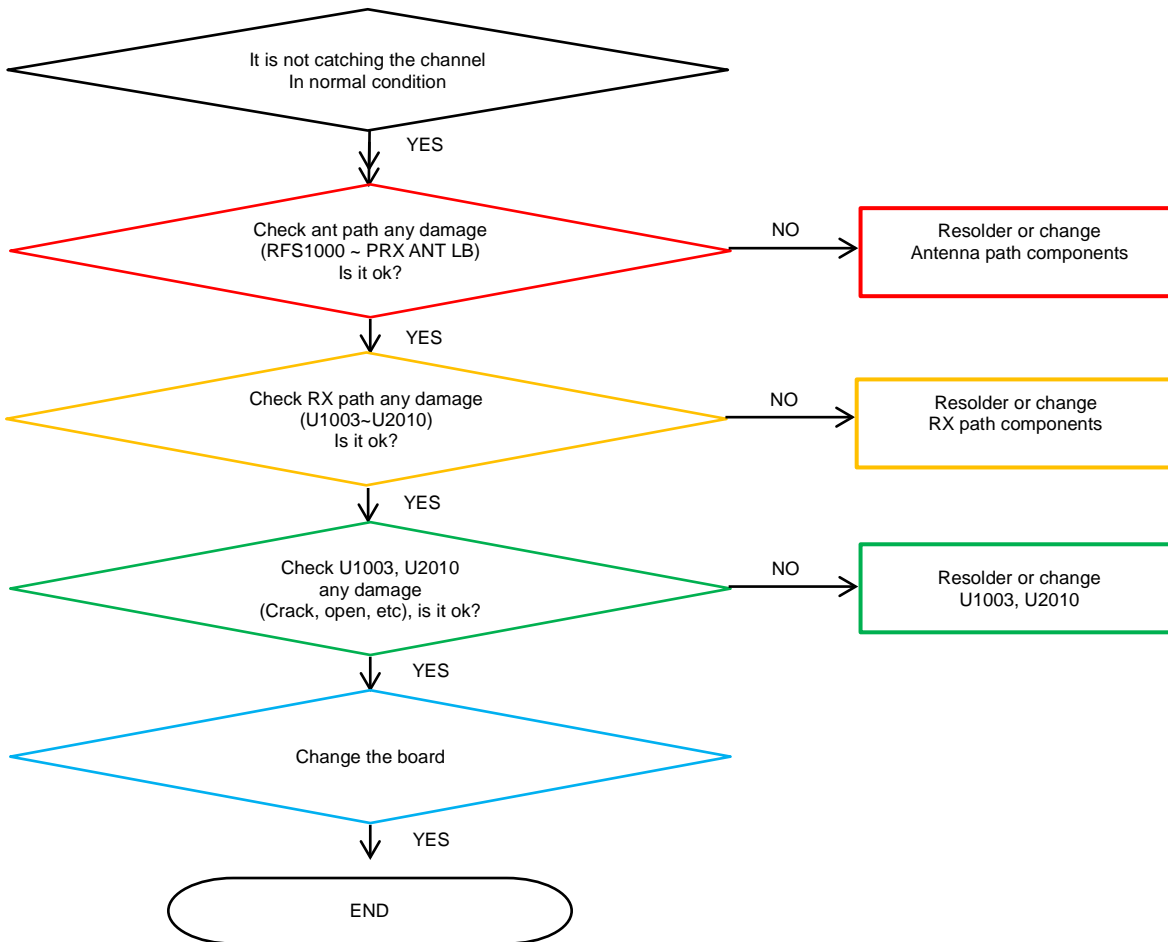
8. Level 3 Repair

8-4-20. Motor



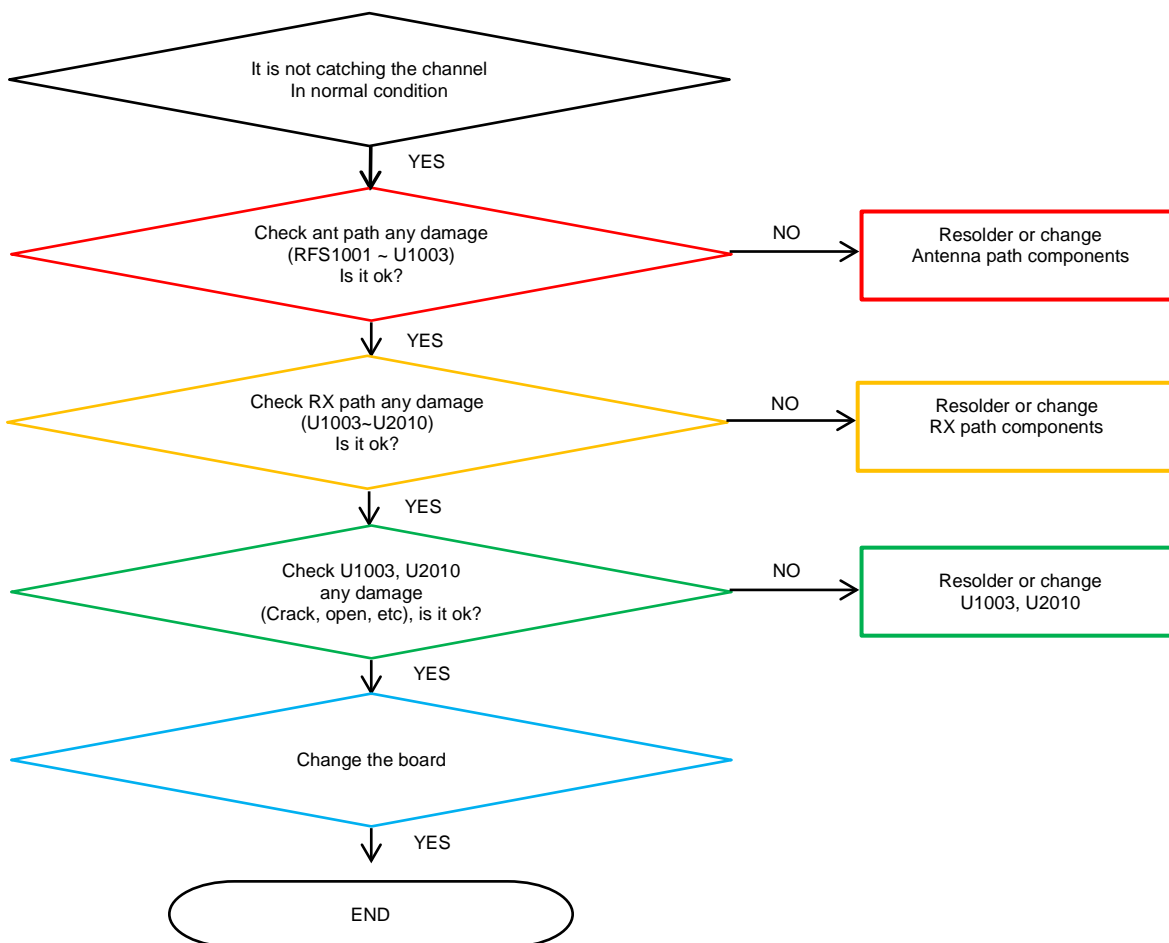
8. Level 3 Repair

8-4-21. GSM 850/900, WCDMA B5/8, LTE B5/8/12/13/17/20/28 PRx



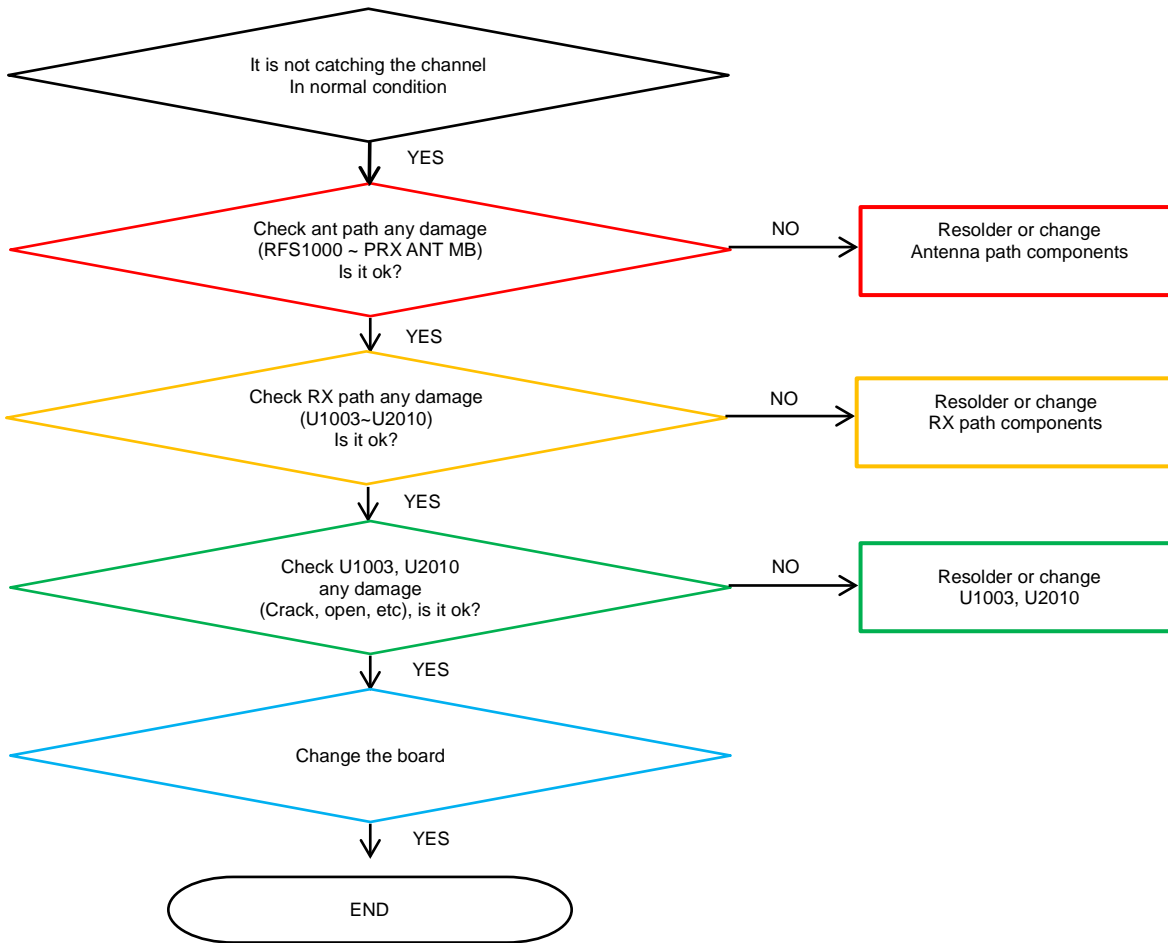
8. Level 3 Repair

8-4-22. LTE B7/38/40/41 PRx



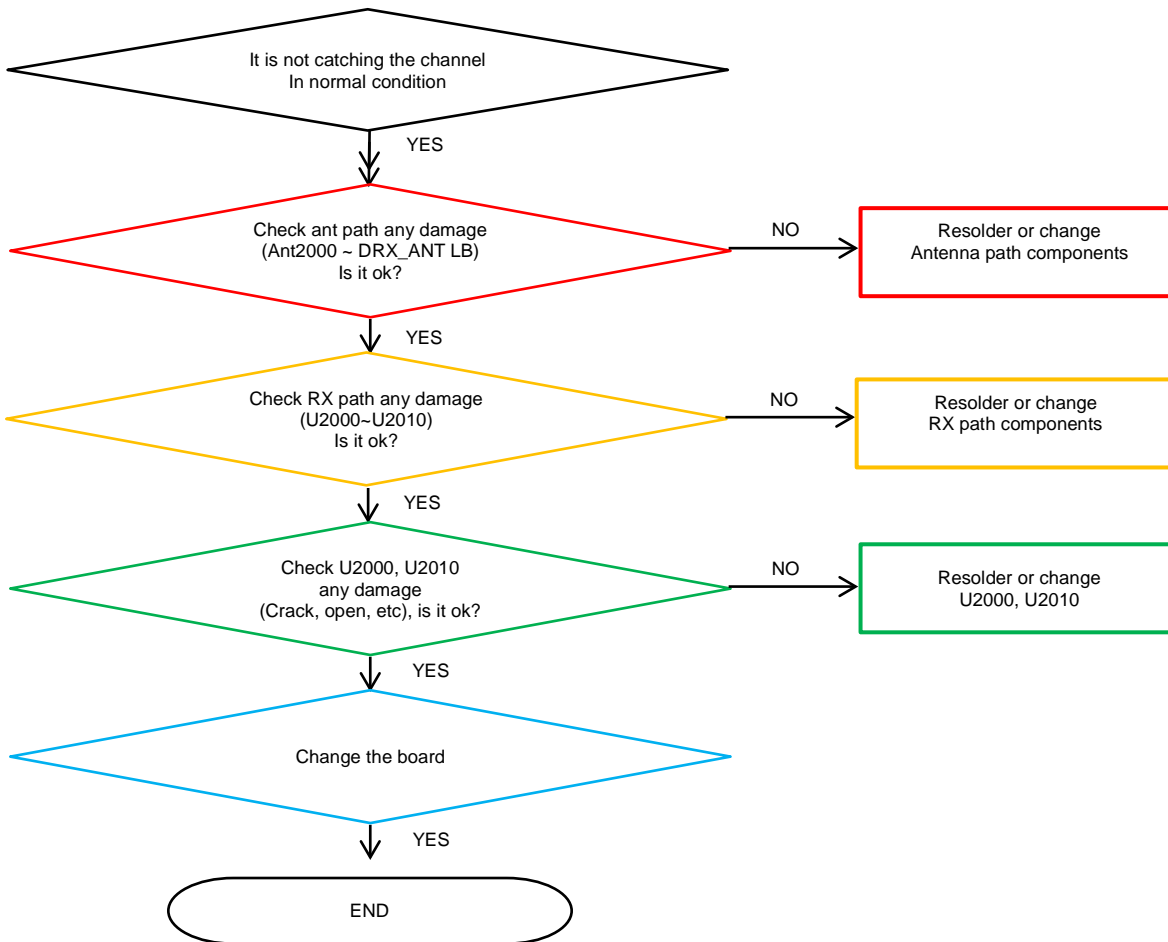
8. Level 3 Repair

8-4-23. GSM DCS/PCS, WCDMA B1/2/4, LTE B1/2/3/4/66 PRx



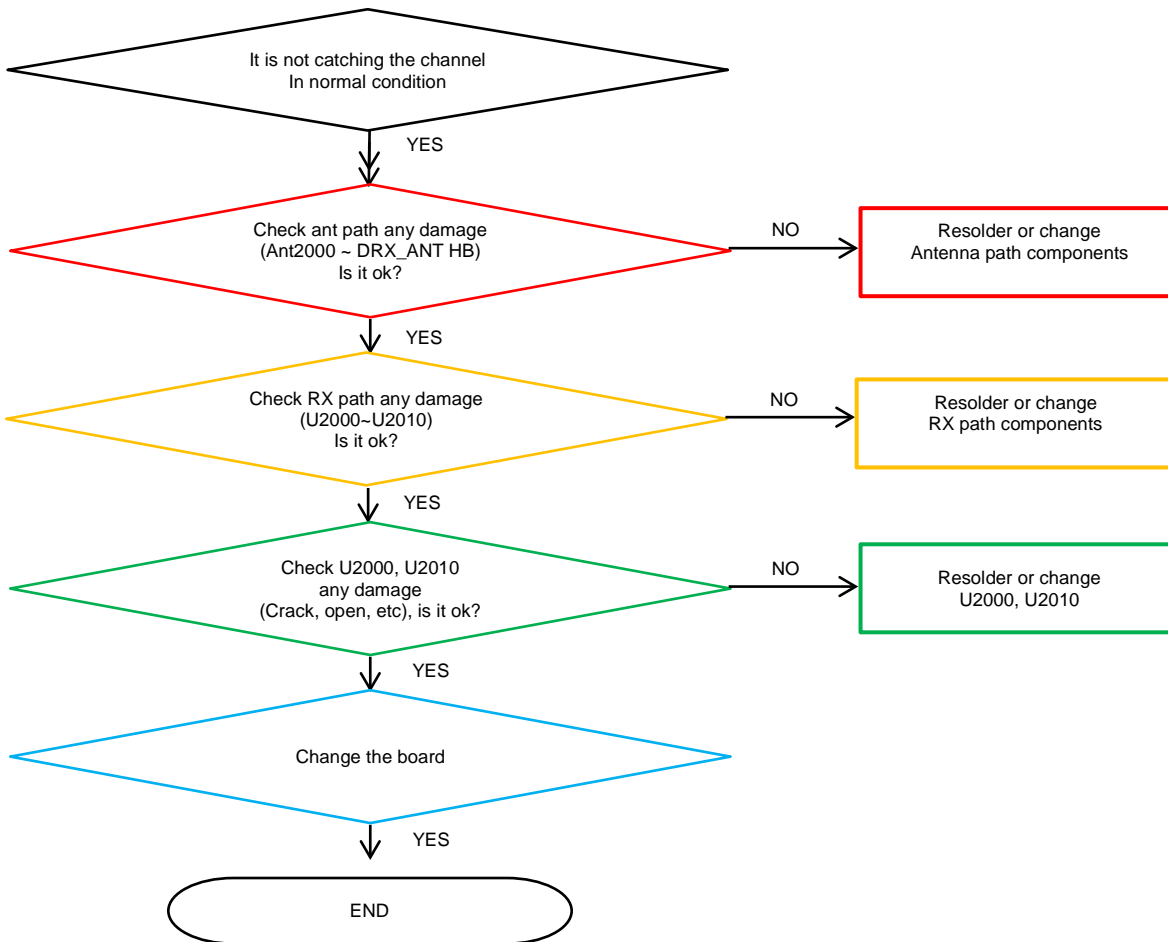
8. Level 3 Repair

8-4-24. GSM 850/900, WCDMA B5/8, LTE B5/8/12/13/17/20/28 DRx



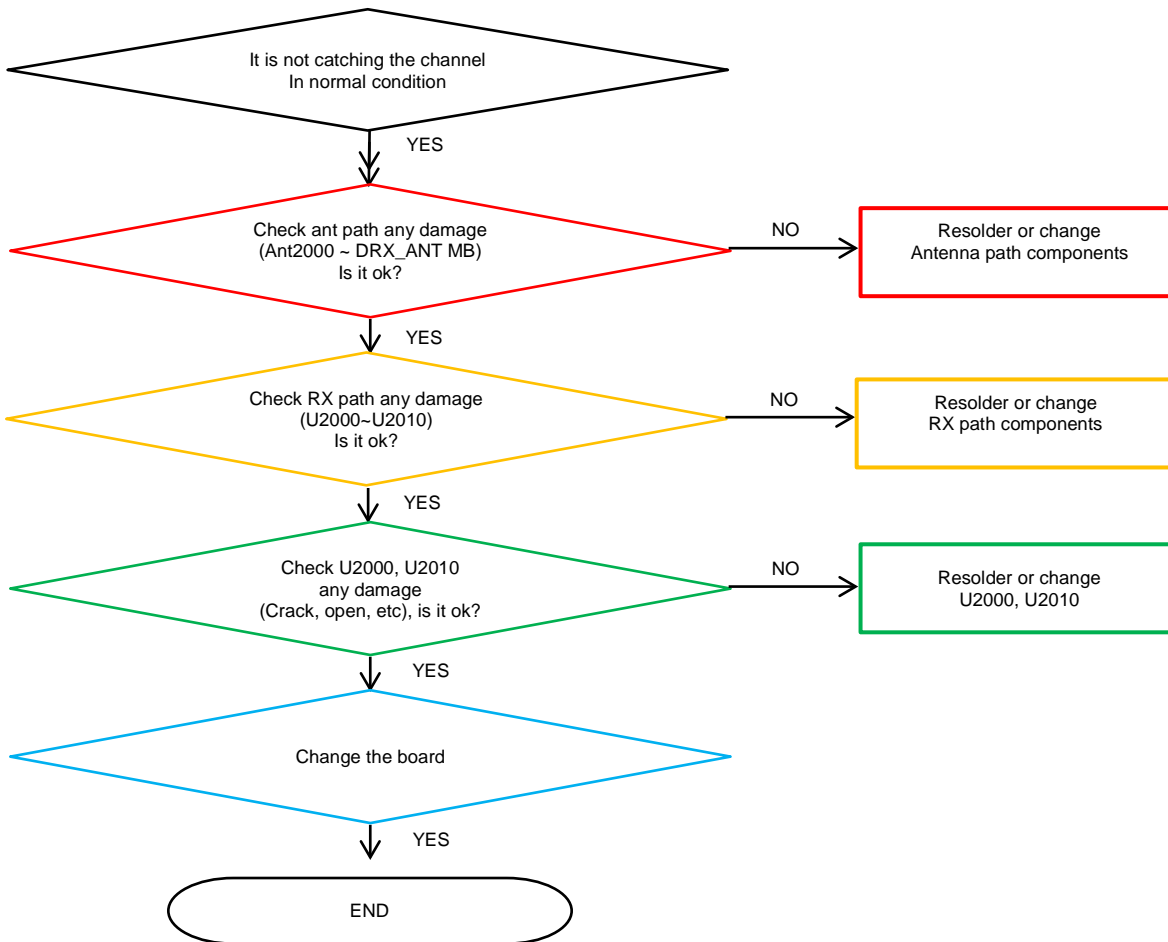
8. Level 3 Repair

8-4-25. LTE B7/38/40/41 DRx



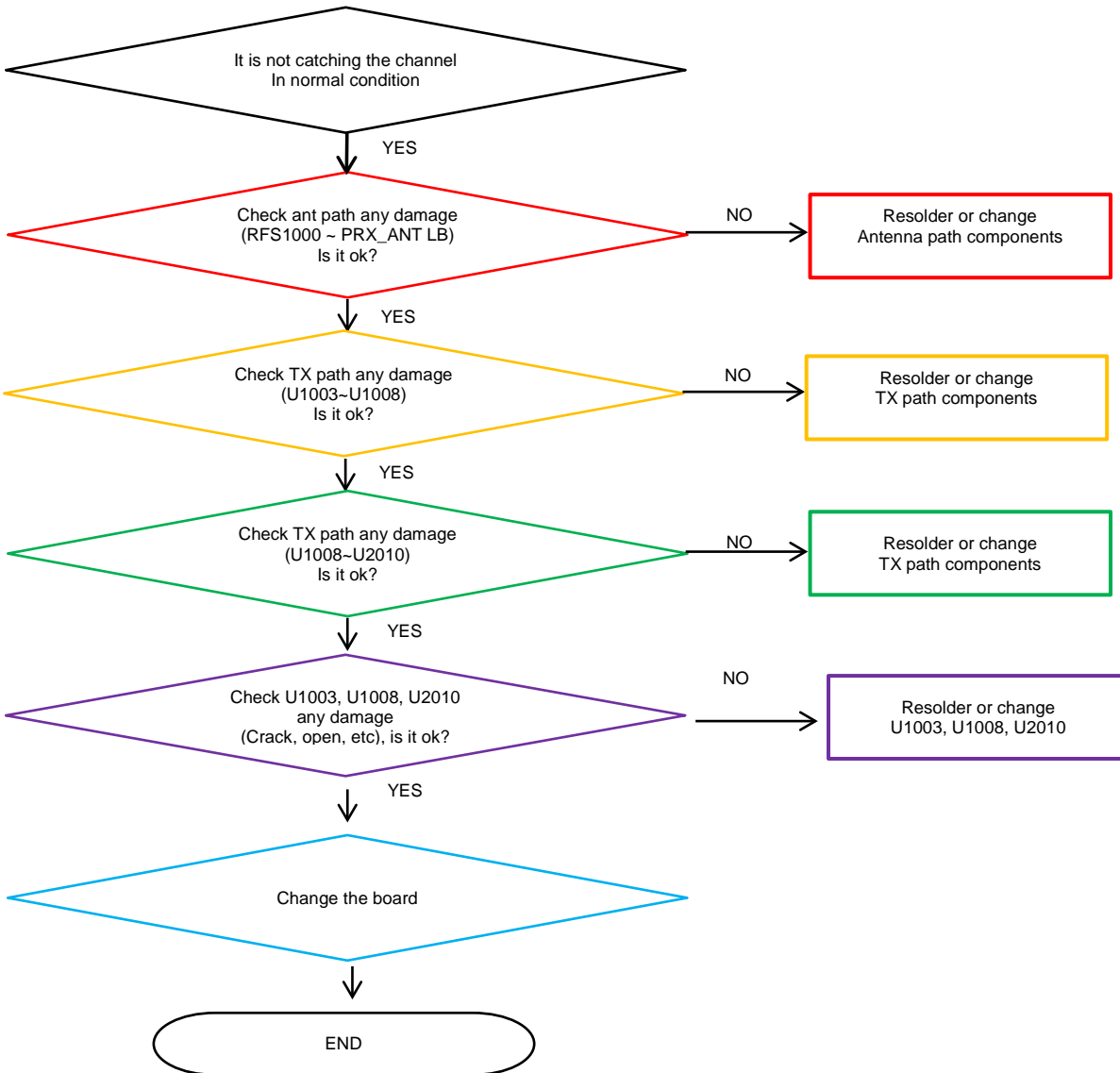
8. Level 3 Repair

8-4-26. GSM DCS/PCS, WCDMA B1/2/4, LTE B1/2/3/4/66 DRx



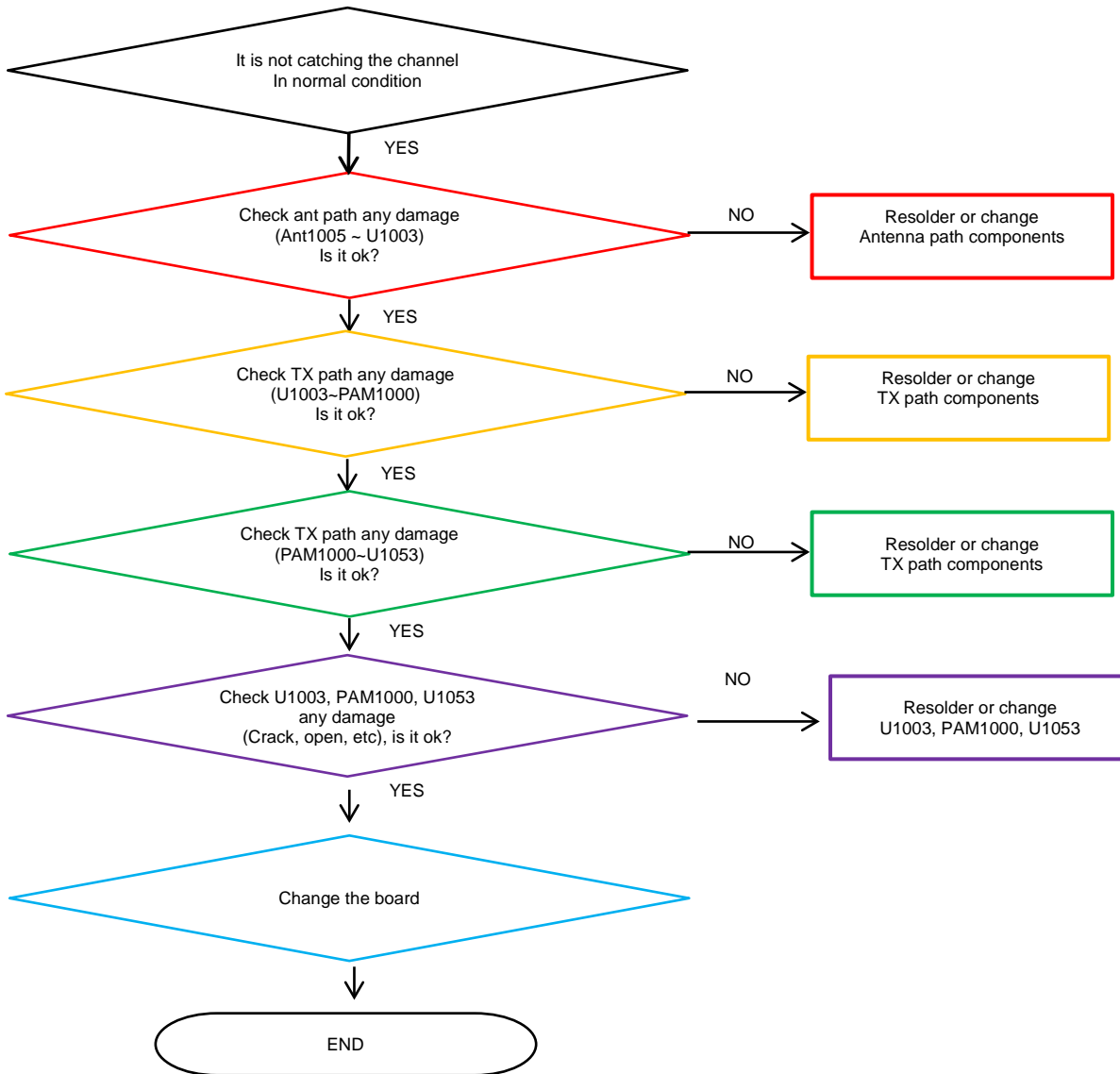
8. Level 3 Repair

8-4-27. GSM 850/900, WCDMA B5/8, LTE B5/8/12/13/17/20/28 TX



8. Level 3 Repair

8-4-28. LTE B7/38/40/41 Tx



8. Level 3 Repair

8-4-29. GSM DCS/PCS, WCDMA B1/2/4, LTE B1/2/3/4/66 Tx

